



WELCOME

*to Ephraim*



Credit: Mike Tittel/DDC

Picturesque Ephraim is a village that respects tradition, yet holds surprises for all tastes. From the moment you enter Ephraim, you will be in awe of the natural beauty of the shoreline against the bluffs and iconic white buildings. Ephraim is a must-see on any Door County vacation.

## *Ephraim Historical Foundation Celebrates 75 Years*



This year marks the 75th Anniversary of the Ephraim Historical Foundation (EHF). Founded in 1949 as a historic preservation non-profit, the organization's story began with a community-led effort to save the Pioneer Schoolhouse on Moravia Street. A focus

on community has permeated the EHF's mission ever since. Over the past seven-and-a-half decades the organization has preserved culturally significant properties and structures throughout Ephraim, such as the Anderson Store, Anderson Barn, Svalhus, Iverson House, and Goodletson Cabin, all through funds donated by the community. The EHF has also assisted the Village of Ephraim in efforts to restore important landmarks like the Anderson Dock. Additionally, the organization has put Ephraim's unique history on display to the public through exhibitions, multi-generational programming, tours, and access to its historic properties and archives. In partnership with the community over the past 75 years, EHF's dedication to local history has kept Ephraim a shining example of enhanced quality of life through preservation.

Consider joining the legacy of preserving and sharing Ephraim's history and culture, and visit [www.ephraim.org](http://www.ephraim.org) for more information.

## Ephraim

### Events

Fyr Bal: Spring Into Summer Festival . . . . .	5
Evenings in Ephraim Bondemarked . . . . .	7
Evenings in Ephraim Concerts . . . . .	9
Christmas in the Village . . . . .	10

### Experience

Social Media . . . . .	3
Beach, Park & Marinas . . . . .	11
Nature & Outdoors . . . . .	12
Peninsula State Park . . . . .	14

### Maps & Resources

Ephraim Walk Path Guide . . . . .	13
Ephraim Map . . . . .	Foldout Map
Door County Map . . . . .	Foldout Map
Historical Sites . . . . .	15
Community Resources . . . . .	16
Visitors Center . . . . .	16
Peninsula State Park Map . . . . .	16

### Ephraim Walk Path Guide

A popular route through Ephraim runs from the Wetlands Preserve to Anderson Dock and eastward. The Ephraim Walk Path Guide is located on page 13.




### Businesses

Accommodations . . . . .	17
Activities & Attractions . . . . .	21
Performing Arts . . . . .	24
Shops . . . . .	25
Galleries . . . . .	27
Restaurants . . . . .	29
Services . . . . .	31

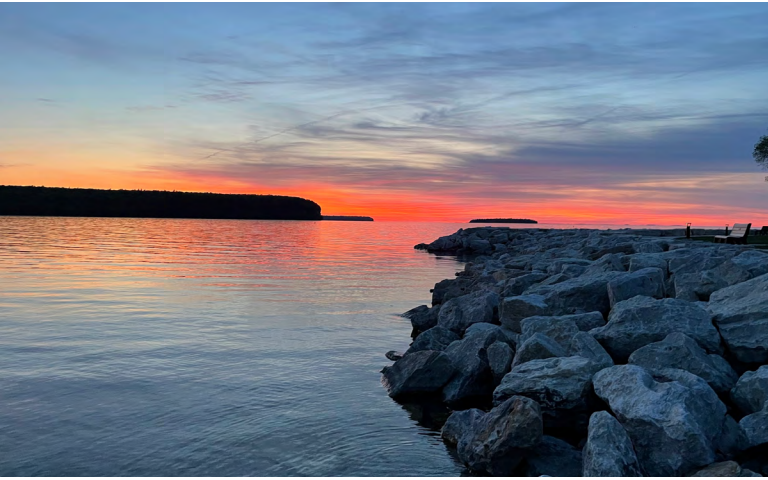
## SOCIAL MEDIA

### *What Will You See?*



Facebook  : Ephraim - Door County, Wisconsin

Instagram  & TikTok  : ephraim\_wi





SATURDAY, JUNE 15, 2024



Welcome summer in the beautiful village of Ephraim! Embrace the village's Scandinavian heritage with a fun-filled day of music, activities, food, and artisan vendors. As the sun sets, the grand bonfire is lit to welcome the long days of summer. The festival draws to a close with a dramatic fireworks display over Eagle Harbor.

Visit our website for more details.





## Sponsors



Thomas Schuder S.C.





*Come and enjoy  
your evening in Ephraim  
starting with our  
evening outdoor market!*

Visit Bondemarked, which is Norwegian for “farmers market.” Peruse the many goods from local food and artisan vendors in the beautiful north end of Ephraim then head downtown to our weekly concert.

Mondays  
3:30pm-6:30pm  
from  
June 17 - August 26  
Open grass lots adjacent  
to the Red Putter  
10404 Water Street (Hwy. 42)

[WWW.EPHRAIM-DOORCOUNTY.COM](http://WWW.EPHRAIM-DOORCOUNTY.COM)





# Sponsors





## 2024 CONCERT SCHEDULE

After visiting the market in north Ephraim, join us every Monday at the gazebo in Harborside Park from 6-8pm to celebrate local musicians. Relax and enjoy the music with friends and family while enjoying the beauty of Ephraim. Bring a chair or blanket and stay for the sunset!

Rain location is Ephraim Village Hall.

Please call 920-854-4989 or check Facebook for updates.

**JUNE 17-TALK OF THE TOWN** The six-piece group consisting of Clarinet/Saxophone, Trumpet, Trombone, Bass, Piano, and Drums has collectively over 300 years of experience. They are one of the hottest Dixieland/Swing Style Jazz Groups north of New Orleans. Their leader, Kevin, has not only performed several times on Bourbon Street in New Orleans but also on the lead float in the Mardi Gras Parade in New Orleans.

**JUNE 24-SPIKE & APRIL** Door County based duo Spike and April play songs that they like from many influences like jazz, swing, blues, rock and their own quirky originals. Music veterans Mike (Spike) Judy on guitar/voice and April (April) Pate on drums/voice create a laid-back mood filled with great songs.

**JULY 1-THE CHERRY TONES** Door County local band The Cherry Tones, are a trio playing high energy vintage rock and roll. With an eclectic list of familiar songs, The Cherry Tones will have you smiling and singing along!

**JULY 8-JEANNE KUHNS** A voice described as soulful yet ethereal, she offers her melodic original songs inspired by nature, people, and the varied landscapes of life with some favorite covers by Tom Waits, Joni Mitchell, Linda Ronstadt and more.

**JULY 15-EDDIE LARSEN'S CLASSIC MEMORIES BAND** A nine-piece band who performs the best of swing, oldies, country, and polkas is sure to entertain! Enjoy the sounds of their various instruments and vocals as they play the sounds of your favorite memories.

**JULY 22-LEWIS & MURPHY** Singer songwriters, recording artists and multi-instrumentalists, entertaining DoCo music lovers for the last five years as members of the Cherry Pickers and recently as a duo. Set lists include like-able favorites by lovable artists, from Hank to Hendrix, with blends of tempo, genre and style.

**JULY 29-MIGHTY MOUTH** Members of Mighty Mouth have toured about, recorded with blues legends, had a song in a Bollywood movie, and played Lambeau Field.

**AUGUST 5-JESS HOLLAND & NICK HOOVER** Jess Holland and Nick Hoover began playing music together over the summer of 2008. Originally drawn to sad songs and murder ballads, the duo has developed a repertoire of Americana originals and covers that includes their favorite artists from John Prine, Joni Mitchell and Bob Dylan to Dr. Dog and Wilco. Their thoughtful harmonies are accompanied by a combination of guitar and banjo, occasionally supported by a full band of local heroes.

**AUGUST 12-ZEPHYR CIESAR** Door County's own Zephyr Ciesar is a singer-songwriter with a magnetic presence and soulful sound. She breathes new life into classics and covers some of her favorite contemporary artists. This wide array of inspiration is what drives her own original music.

**AUGUST 19-ERIN KREBS QUARTET** Fronted by dynamic Jazz Vocalist Erin Krebs, the Quartet will showcase Erin's original music and unique arrangements of classics from the Great American Songbook in a variety of Jazz & Blues styles.

**AUGUST 26-KATIE DAHL WITH SPECIAL GUEST ERIC LEWIS** Singer-songwriter Katie Dahl is a Door County favorite who performs her smart, original folk music across the country. She is joined by upright bassist Rich Higdon and Memphis multi-instrumentalist Eric Lewis.

# CHRISTMAS

IN THE VILLAGE

SATURDAY, DECEMBER 7, 2024



Santa Claus will be in Ephraim with his reindeer and elves and bringing lots of holiday cheer!  
Visit our website for details of the day's activities.

## Sponsors



# BEACH, PARK & MARINAS

## Anderson Dock Marina

The marina can be found at 3083 Anderson Lane, also the site of the historic warehouse known for its boat name graffiti. Note that names should only be painted on the building, not anywhere else on the dock. When painting your names, please do not use spray paint. Seasonal and transient slips are available. Fishing is permitted off the pier.

Credit: DDC/Mike Tittel



## Firehouse Dock & Marina

Named for the historic firehouse built into the hill just across the highway, Firehouse Dock and Marina is Ephraim's primary marina, with both permanent and transient boat slips available. Offsite trailer parking at 10011 Norway St. (no overnight) & 10285 Townline Dr. (long & short-term).

Credit: DDC/John Nienhuis



## Ephraim Beach

The Village maintains a 175-foot span of public sand beach at 9877 Water Street (Hwy. 42), with parking, rest rooms, foot wash and drink machine.

Credit: DDC/Mike Tittel



## Harborside Park

The park features playground equipment, benches and picnic area, public parking and a beautiful view of the bay. The Harborside Park gazebo is a perfect spot to enjoy Door County sunsets and our weekly summer Evenings in Ephraim concert series with family and friends.



Credit: DDC/Dan Eggert

Credit: DDC/Mike Tittel



## Cherry Street Steps

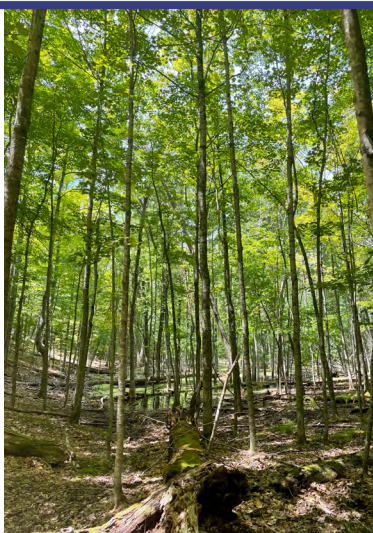
Get a new perspective of Ephraim, Eagle Harbor, Peninsula State Park, and Horseshoe Island from the viewing platform at the top of these steps adjacent to Harborside Park. You may recognize the view from some of our most popular social media posts. Tag #cherrystreetsteps in your photos!

## Wetlands Preserve

A rustic entrance at 9820 Water Street (Hwy. 42) leads to two looped trails through seven acres of a regenerating wetland ecosystem. Parking available.

## Ephraim Preserve at Anderson Pond

Purchased by the Door County Land Trust from the Anderson family, these 27 acres located at 10118 Moravia Street will forever retain the pond, woods, wildlife and natural beauty for all residents and visitors to enjoy.



Credit: DDC/Dan Eggert

## Sunset Times

Times the sun sets on the first and last day of each month.

January .....	4:17 - 4:55pm
February .....	4:46 - 5:35pm
March .....	5:36 - 7:15pm
April .....	7:17 - 7:53pm
May .....	7:55 - 8:28pm
June .....	8:29 - 8:40pm
July .....	8:40 - 8:17pm
August .....	8:16 - 7:28pm
September .....	7:26 - 6:31pm
October .....	6:29 - 5:38pm
November .....	5:36 - 4:08pm
December .....	4:08 - 4:16pm

# EPHRAIM WALK PATH GUIDE

## NOTES



The entire green loop measures 3 miles.



Shoreline walk (dashed green line) measures 1.5 miles

\* Sidewalk on east side of Hwy. 42/Water Street from Brookside Lane to Ephraim Fire Museum



Jetty



\* Rough path from Moravia to Willow St. (An alternate route is through the Moravian Church parking lot.)

## KEY TO MAP NUMBERS

- 1 Wetlands Preserve
- 2 Iverson House Museum (1853)
- 3 Moravian Cemetery
- 4 Moravian Church
- 5 Lutheran Church
- 6 Pioneer Schoolhouse Museum (1880) & Goodletson Cabin (1850s)
- 7 Ephraim Historical Foundation Offices & Anderson Barn History Center
- 8 Anderson Dock & Anderson Store Muesum (1858)
- 9 Ephraim Visitor Information Center
- 10 Village Hall & Ephraim Library



# PENINSULA STATE PARK



Credit: DDC/John Nienhuis

Established in 1909, Peninsula State Park is a 3,776-acre state treasure located on Ephraim's southern boundary. In the summer the park offers hiking, biking, golfing, camping, geocaching or boating. Relax at Nicolet Beach or take in a show at their outdoor amphitheater, home to Northern Sky Theater's summer season. In the winter, enjoy cross-country skiing, snowshoeing, sledding, snowmobiling, snow camping or ice fishing. Views of Ephraim from across Eagle Harbor await you from Peninsula State Park Golf Course, Restaurant & Driving Range. Established in 1921, the 18-hole course cuts through the park's wooded slopes and limestone cliffs. The park is also home to the 6-Hole Short Course & Golf Education Center!

## *Eagle Tower*

See Ephraim, surrounding islands, and panoramic views of Peninsula State Park from high above the stunning Niagara Escarpment. Climb the 100 steps or take the 850 foot, fully-accessible canopy walk to the top of the viewing platform. Open seasonally from May 1 - October 31.



Credit: Tad Dukehart



Credit: DDC/Mike Tittel

## *Eagle Bluff Lighthouse*

Eagle Bluff Lighthouse was established in 1868 and automated in 1926. It's one of 10 in Door County. Restoration for the lighthouse began in 1960 by the Door County Historical Society. The lighthouse is open for tours from late-May through mid-Oct.

# HISTORICAL SITES



**NUMBERS ON THIS MAP REFERENCE HISTORICAL SITES ONLY.**

- |   |  |
|---|--|
| 1. Anderson Dock and Warehouse (1858)                 | 19. Original Site of Ephraim Moravian Church                 |
| 2. Ice House (late 1800s)                             | 20. Oscar Wilson's Confectionery and Ice Cream Parlor (1906) |
| 3. Anderson Gas Station (ca.1915)                     | 21. Hillside Hotel (1890)                                    |
| 4. Anderson Store Museum (ca. 1858)                   | 22. Moravian Settlers Monument                               |
| 5. Anderson Barn Museum (ca. 1870)                    | 23. Old Ephraim Fire Station (ca. 1934)                      |
| 6. Aslag Anderson Family Home (1870-1884)             | 24. Pioneer School (1880) and Goodletson Cabin (1857)        |
| 7. Irwin Family Home (1912)                           | 25. Lutheran Church (1882)                                   |
| 8. Visitor Information Center (ca. 1930)              | 26. Anderson Hotel (ca. 1900)                                |
| 9. Peter Peterson/James Hansen's General Store (1874) | 27. Moravian Church (1859)                                   |
| 10. Edgewater Condominiums (1890s)                    | 28. Historic Iverson House (1853)                            |
| 11. Red Door Cottage (c. 1900)                        | 29. Pease Cottage (1902)                                     |
| 12. Lutheran Parsonage (1874)                         | 30. Evergreen Beach Hotel (late 1800s)                       |
| 13. Original Post Office Building (1862)              | 31. Moravian Cemetery (1853)                                 |
| 14. Abraham Oneson Home (late 1800s)                  | 32. Hans Nelson Farmhouse (1890)                             |
| 15. Andrew Oneson Home (1918)                         | 33. Jacob Smith Home (1890s)                                 |
| 16. Sohns' Meat Market (1905)                         |  |
| 17. Old Creamery Building (1900)                      |  |
| 18. Ephraim Village Hall (ca. 1926)                   |  |

Credit: Ephraim Historical Foundation

For more information on historical sites and tours please contact the Ephraim Historical Foundation:  
920-854-9688 • info@ephrain.org





- ACCOMMODATIONS
- ACTIVITIES & ATTRACTIONS
- PERFORMING ARTS
- SHOPS
- GALLERIES
- RESTAURANTS
- SERVICES

- P** PARKING
- PUBLIC RESTROOM
- POST OFFICE
- L** PUBLIC LIBRARY
- CHURCH
- COUNTY/STATE PARK
- BOAT LAUNCH
- GOLF COURSE
- BEACH
- T** TENNIS COURTS
- AIRPORT
- CHERRY STREET STEPS

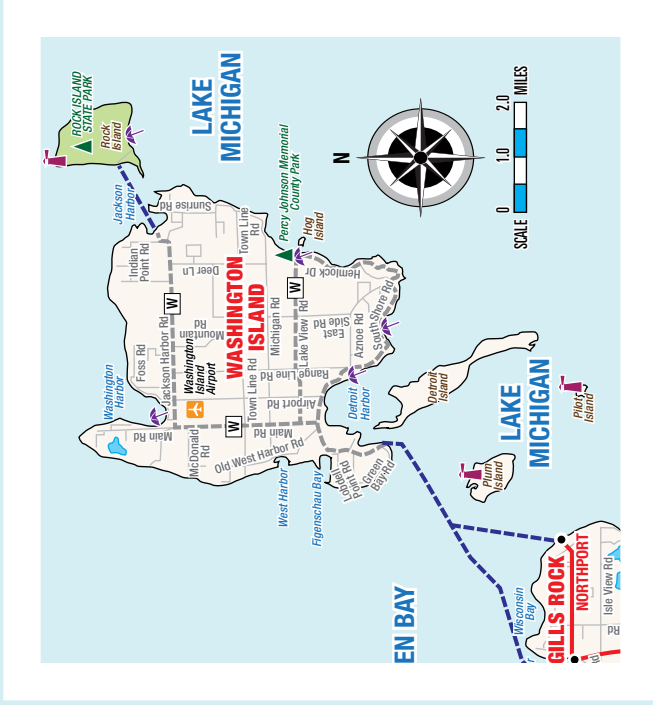
MAP NOT DRAWN TO SCALE  
(not a complete residential map)







- 7
- 6
- 5
- 4
- 3
- 2
- 1

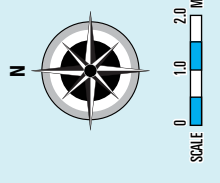
- 1. Door County Trolley
- 2. Peninsula Players Theatre
- 3. Edge of Park Bike Rentals
- 4. Door Community Auditorium
- 5. Segway the Door Tours
- 6. Skyway Drive-In Theatre
- 7. Fish Creek Scenic Boat Tours
- 8. Northern Sky Theater
- 9. Maple Grove Cottage
- 10. Balistreri Fine Art
- 11. Sergio's Mexican Street Food
- 12. Peninsula State Park Golf Course & Restaurant
- 13. Peninsula State Park Short Course
- 14. Peninsula State Park Driving Range
- 15. Good Eggs
- 16. Bay Breeze Resort
- 17. Alfon Jensen Cottages
- 18. Ephraim Village Cottages
- 19. Zabler Design Jewelers
- 20. Eagle Harbor Inn
- 21. Aunt Velma's House'n Heart
- 22. Anatolia Cuisine DC
- 23. Prince of Pierogi Restaurant
- 24. The Ephraim House
- 25. Collings Cottages LLC
- 26. Beach People Ephraim
- 27. The Great Outdoors
- 28. Water Street Inn
- 29. Arbor Crown Properties & Hillside Waterfront Hotel
- 30. Ephraim Moravian Church
- 31. Hobby Horse Cottage
- 32. Pioneer Acres Cottages
- 33. Cultured

- 34. Aqualand Campground
- 35. Shoreline Boat Tours
- 36. Wilson's Restaurant & Ice Cream Parlor
- 37. Bella Sailing Cruises & South Shore Pier Boat Rental
- 38. Winter Visitor Information Center
- 39. Mayberry's Carriage & Sleigh Rides
- 40. Chef's Hat Café
- 41. Trixie's
- 42. Lodgings at Pioneer Lane
- 43. Pearl Wine Cottage
- 44. Ephraim Shores Resort & Sunset Harbor Grill
- 45. Village Green Lodge
- 46. Ephraim Guest House
- 47. Edgewater Resort
- 48. Old Post Office Restaurant
- 49. Summer Visitor Information Center
- 50. Ephraim Yacht Club
- 51. Pine Grove Resort
- 52. Ephraim Historical Foundation
- 53. Hardy Gallery
- 54. Vintage
- 55. Waterbury Inn
- 56. Sip
- 57. Artzy Studio
- 58. FM 106.9 The Lodge WLGE
- 59. The Simple Solution
- 60. Green Gables
- 61. Fine Line Designs Gallery
- 62. High Point Inn
- 63. Somerset Inn & Suites
- 64. Ephraim Motel
- 65. Red Putter Mini Golf
- 66. Door County Rock & Gem
- 67. Klaus's Kitchen Inc.
- 68. Island Lavender Company
- 69. Summer Kitchen Restaurant
- 70. Peninsula Music Festival Office
- 71. Sister Bay Scenic Boat Tours
- 72. Door Guide Publishing
- 73. David Insurance, A Vitalize Company
- 74. Innovative Printing
- 75. Nicolet National Bank
- 76. Door County Piggly Wiggly
- 77. Door County Medical Center



-  County/State Park
-  Beach
-  Lighthouse
-  Airport
-  State Highway
-  County Highway
-  Ferry Route

Map by Boertcher Communications, LLC



- DOOR COUNTY, WISCONSIN -

# COMMUNITY RESOURCES

## BETHANY LUTHERAN CHURCH

3028 Church Street  
920-854-4065

## EPHRAIM MORAVIAN CHURCH

9970 Moravia Street  
920-854-2804

## UNITARIAN UNIVERSALIST FELLOWSHIP OF DOOR COUNTY

10341 Water Street (Hwy. 42)  
920-854-7559

## EPHRAIM LIBRARY

9996 Water Street (Hwy. 42)  
920-854-2014

## FIREHOUSE MARINA

9970 Water Street (Hwy. 42)  
920-854-6861

## U.S. POST OFFICE

3043 Cedar Street  
920-854-4426

## VILLAGE OF EPHRAIM ADMINISTRATIVE OFFICE

10005 Norway Street  
920-854-5501

## EPHRAIM-GIBRALTAR AIRPORT

9667 Maple Grove Road  
920-854-9711

# VISITOR CENTER

920-854-4989, Year-round  
Vacation@Ephraim-DoorCounty.com



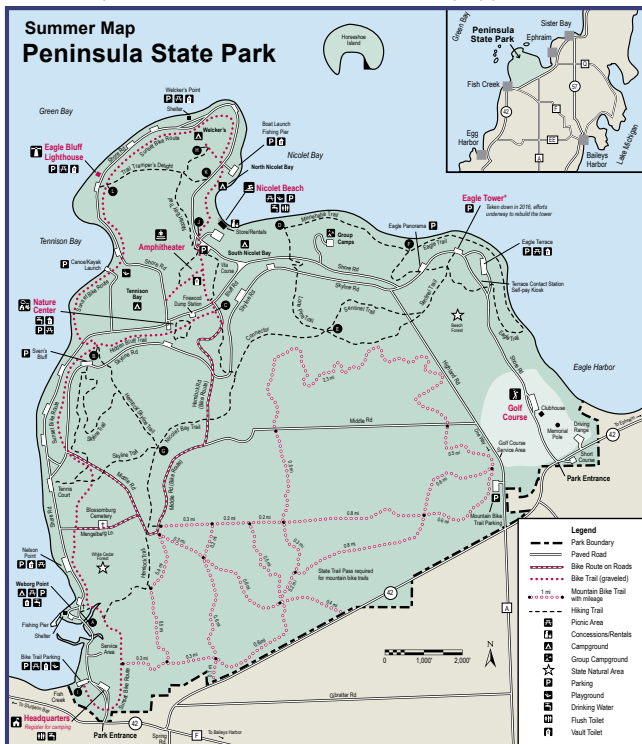
## SUMMER LOCATION

10049 Water Street (Hwy. 42)  
May-October



## WINTER LOCATION

9996 Water Street (Hwy. 42)  
By Appointment





## ACCOMMODATIONS

### ALFON JENSEN COTTAGES

9846-9848 Water Street (Hwy. 42)

P.O. Box 46, Ephraim.....651-491-9574 or 920-854-2655

Beside the use of a private beach on Eagle Harbor, our cottages provide TV, DVD, WiFi, full kitchen, screened front porch and outside grill. We also allow dogs! The cottages are within walking distance of the Peninsula Park golf course to the south and north to the public library, Wilson's, the post office, Ephraim's Historical Museum and other interesting, fun and "must see" spots. mdhickey@hotmail.com (See map #17)

### AQUALAND CAMPGROUND

2445 Hwy. Q, East of Ephraim.....920-854-4573

With 150 campsites on 67 acres, our family-run campground is an ideal place to unwind and experience Door County. You'll love our heated pool, paths and trout ponds. Located minutes from beaches, shopping, restaurants, and Peninsula State Park.

www.aqualandcampground.com (See map #34)

### BAY BREEZE RESORT

9844 Water Street (Hwy. 42).....920-854-9066

Enjoy waterfront access or indulge in a rain shower with multiple body sprays! Outdoor heated pool and whirlpool. Two-room suites or deluxe single units. Choose from in-room amenities like a whirlpool, gas fireplace or views of Eagle Harbor. Electric vehicle charging stations (for guest use only), expanded parking and a storage shed for bikes and kayaks. Located near Peninsula State Park. Free Wi-Fi.

www.BayBreezeResort.com; Innkeeper@BayBreezeResort.com

(See map #16)

### COLLINGS COTTAGES LLC

9916 Water Street (Hwy. 42).....888-980-1355

Collings Cottages are located in the heart of historic Ephraim! Minutes away from everything that Ephraim has to offer: shopping, restaurants, and the public beach. Our cozy log cabin sleeps 6 with all the amenities of home. The Summer House sleeps 4. We are open May 1 through November 15th.

thesimplelifelifehospitality.com;

contactus@thesimplelifelifehospitality.com (See map #25)

### EAGLE HARBOR INN ✱

9914 Water Street (Hwy. 42).....920-854-2121

Across from the bay in the Historic District, one block to Ephraim Beach! Our Inn rooms and 1 & 2 bedroom whirlpool suites with fully equipped apartment size kitchen offers couples and families a main street location to call home. Indoor pool, sauna, fitness center, playground, electric vehicle charging stations, fiber optic service, lawn games, Honeymoon & Elopement pkgs., and Afternoon Treats. Open year-round and Travel Green certified.

www.EagleHarborInn.com; welcome@eagleharbor.com (See map #20)

### EDGEWATER RESORT ✱

10040 Water Street (Hwy. 42).....920-854-2734

Edgewater Resort stands out on the shoreline due to its classic architecture and amazing views of the bay. Most rooms are large one-bedroom condos featuring a king bedroom with whirlpool tub, full kitchen, living room with fireplace, and water view veranda. Proudly featuring the best sunset in Door County! Pet friendly cottages also available. Visit us year round!

www.edge-waterresort.com; stay@edge-waterresort.com (See map #47)

### EPHRAIM GUEST HOUSE ✱

3042 Cedar Street.....800-589-8423

The Ephraim Guest House has 15 unique suites, each with its own personality and charm. Each suite features a fully equipped kitchen, a living room with Digital TV, and a dining area. Some suites offer gas fireplaces and whirlpool tubs. Relax at the end of your busy day surrounded by lush gardens or spend a quiet evening on your private patio.

www.ephraimguesthouse.com; ephraimguesthousedc@gmail.com

(See map #46)



## THE EPHRAIM HOUSE ❄️

9870 Hoganson Lane.....608-628-8199

Enjoy casual elegance at The Ephraim House, a fully-furnished vacation home located in the heart of historic Ephraim, just steps from the waterfront. This house boasts 5 bedrooms and can accommodate up to 14 guests, along with a hot tub, outdoor fire pit, and professional-grade kitchen. You can also take advantage of the exciting amenities such as our kayak, paddleboards, bicycles, and high-speed internet (400 Mbps). Let us help you create an unforgettable Door County vacation experience!

[www.housesofdoor.com](http://www.housesofdoor.com); [theephraimhouse@gmail.com](mailto:theephraimhouse@gmail.com)

(See map #24)

## EPHRAIM MOTEL

10407 Water Street (Hwy. 42).....920-854-5959

Located in the charming village of North Ephraim, our cozy accommodations feature Wi-Fi, mini fridge, microwave, and in-room coffee. Indulge in a daily hot breakfast with a variety of hot items alongside continental options. Unwind in our heated outdoor pool or in one of our garden seating areas. Take advantage of our on-site grills and bike rentals. Sorry, no pets. Conveniently located near all of Door County's attractions.

[www.ephraimotel.com](http://www.ephraimotel.com); [frontdesk@ephraimotel.com](mailto:frontdesk@ephraimotel.com) (See map #64)

## EPHRAIM SHORES RESORT

10018 Water Street (Hwy. 42).....920-854-2371 or 877-854-2371

Relaxed lodging with a water view, in the heart of Ephraim. Sundeck, beach, playground, bikes, indoor pool and whirlpool, exercise and game rooms, A/C, cable TV, Wi-Fi, microwaves, refrigerators, coffee pots, in-room spas, kitchens. Boat rental, shops, golf and tennis nearby. Smoke free property. Sorry, no pets.

[www.EphraimShores.com](http://www.EphraimShores.com); [reservations@ephraimshores.com](mailto:reservations@ephraimshores.com)

(See map #44)

## EPHRAIM VILLAGE COTTAGES

3082 Larson Lane.....920-559-2565

Starry nights and refreshing mornings await you at family owned, Ephraim Village Cottages, a three-acre property with twelve fully equipped, 1-3-bedroom cottages in the heart of Door County and less than a 2-minute walk to the beach. Cottages include all the comforts of home: high speed internet, heat and air, cable TV, a fireplace (in most), charcoal grill, picnic table, deck and lawn chairs. The communal area boasts a huge fire pit that seats twelve people comfortably, hammocks, corn-hole/bags, badminton, bocce ball, frisbees, and playground. The property is dog friendly (2 max) and perfect for family reunions of 50 people or less. Stay and Make Door County Memories that Last a Lifetime. @ephraimvillagecottages (Facebook, Instagram, TikTok). Book directly via:

[ephraimvillagecottages.com](http://ephraimvillagecottages.com); [cottages@ephraimvillagecottages.com](mailto:cottages@ephraimvillagecottages.com)

(See map #18)

## GREEN GABLES ❄️

10355 Bella Vista Lane .....646-210-7171

Green Gables offers four beautiful vacation rentals, available year-round – each unique in size, layout and style. Whether a romantic up-scale log cabin for two, richly decorated in Nordic style, or a spacious family-sized home, full of Door County charm, Green Gables has a place to suit everyone. But it is the gardens at Green Gables that are the star attraction. Please visit the website to learn more about this beautiful spot and to see why we have earned more than 300 five-star reviews.

[www.greengablesdoorcounty.com](http://www.greengablesdoorcounty.com); [greengablesdoorcounty@gmail.com](mailto:greengablesdoorcounty@gmail.com)

(See map #60)

Credit: Edgewater Resort





## ACCOMMODATIONS

### HIGH POINT INN \*

10386 Water Street (Hwy. 42).....920-854-9773 or 800-595-6894

Relax in a 1, 2, or 3 bedroom non-smoking suite complete with fireplace, in-room whirlpool bath, full kitchen and living/dining area. Resort amenities include free Wi-Fi, indoor pool and whirlpool, outdoor pool, exercise and game rooms, BBQ grills and children's playground. Walk to shops, restaurants and day spa. Open year-round. Seasonal rates and packages.

[www.highpointinn.com](http://www.highpointinn.com); [info@highpointinn.com](mailto:info@highpointinn.com) (See map #62)

### HILLSIDE WATERFRONT HOTEL \*

9980 Water Street (Hwy. 42).....920-854-7666

Enjoy the hospitality of our historic bed and breakfast along with the perfect balance of elegance and wellness at Hillside Waterfront Hotel. Relax and be sure to take advantage of our concierge services and luxurious amenities during your stay. We have five beautiful rooms that include spa-quality accommodations and balconies with gorgeous views. The inn and our two family-friendly private cottages are just steps from the sandy beaches and stunning sunsets of Eagle Harbor - not to mention walkable Ephraim and its delicious dining scene. Hillside is open year round for guests to enjoy their best stay on the bay in Door County.

[www.hillsideofdoorcounty.com](http://www.hillsideofdoorcounty.com); [concierge@hillsideofdoorcounty.com](mailto:concierge@hillsideofdoorcounty.com)  
(See map #29)

### HOBBY HORSE COTTAGE

9970 South Dane Street.....727-420-4246 or 727-420-4264

The Hobby Horse Cottage is a spacious two story home that features 4 bedrooms, 2 baths and sleeps 8. It has a large eat-in-kitchen and roomy dining and living areas. Located on 1.5 acres overlooking the bay in the heart of Ephraim. Cable and WiFi. Rents Saturday to Saturday, May 25 - October 5 Please call or e-mail for additional pictures or information.

<https://www.vrbo.com/823896>; [hobbyhorsecottage@gmail.com](mailto:hobbyhorsecottage@gmail.com)  
(See map #31)

### LODGINGS AT PIONEER LANE

9998 Pioneer Lane.....920-854-7656

Centrally located in Ephraim, the family-owned and operated Lodgings at Pioneer Lane, is ready to welcome you! Each of the seven individually decorated rooms are adorned with a king bed with fine linens, a spacious shower, a refrigerator and microwave, and a personal outdoor seating area. Book your stay today!

[www.lodgingsatpioneerlane.com](http://www.lodgingsatpioneerlane.com); [lodgingsatpioneerlane@gmail.com](mailto:lodgingsatpioneerlane@gmail.com)  
(See map #42)

### MAPLE GROVE COTTAGE

9721 Maple Grove Road.....414-534-8017

Maple Grove Cottage is located in Door County Wisconsin's historic Village of Ephraim. It is very private and nestled among cedar trees. The property and cottage features a turnaround driveway and an automatic numbered keypad door lock, kitchen, WiFi, 50" smart TV, air conditioned bedroom, snack bars, chocolates, coffee, and tea. In the front yard you will find a gas grill, picnic table, gas fire pit and large hammock. Virtually across the street from Peninsula State Park Golf Course and park entrance Maple Grove Cottage is centrally located for shopping, restaurants, entertainment, and beaches. Available May through the end of October.

[www.maplegrovecottage.com](http://www.maplegrovecottage.com); [balistrerifineart@wi.rr.com](mailto:balistrerifineart@wi.rr.com) (See map #9)

### PINE GROVE RESORT

10080 Water Street (Hwy. 42).....920-854-2321

Located in the heart of Ephraim, Pine Grove's waterfront resort and private shoreline with a 40 foot pier offers the best sunset viewing in Door County. As you watch the sailboats glide across the blue waters, the refreshing breeze will whisper into your room. Watch the breathtaking sunsets, pamper yourself, and escape from the harried world you left behind.

[www.pinegrovedoorcounty.com](http://www.pinegrovedoorcounty.com); [info@pinegrovedoorcounty.com](mailto:info@pinegrovedoorcounty.com)  
(See map #51)



## PIONEER ACRES COTTAGES

2965 Hwy. Q.....920-854-2425

Quiet, wooded setting 3 blocks from the water with 1, 2 or 3 bedroom cottages, some log, each with fireplace, kitchen and cable TV. Grills, picnic tables and firewood provided. Free internet. Tennis courts and playground adjacent. Open May-October.

[www.PioneerAcresCottages.com](http://www.PioneerAcresCottages.com); [kwilson54211@gmail.com](mailto:kwilson54211@gmail.com) (See map #32)

## SOMERSET INN & SUITES

10401 Water Street (Hwy. 42).....920-854-1819 or 800-809-1819

Where warm hospitality welcomes you at the DOOR! Located in an idyllic location in the north woods of Ephraim and within walking distance to shops, attractions and restaurants. Spacious hotel rooms, fireplace and whirlpool suites all with microwave, refrigerator, and private balcony or patio. Indoor pool and hot tub, heated outdoor pool, gas firepit patio, grilling station with picnic areas, free Wi-Fi, & gathering rooms.

[www.somersetinndc.com](http://www.somersetinndc.com); [somersetinndoorcounty@gmail.com](mailto:somersetinndoorcounty@gmail.com)

(See map #63)

## VILLAGE GREEN LODGE

10013 Poplar Street

Off Cedar Street.....920-854-2515

Relax. Renew. Retreat. Walk to all things Ephraim! Enjoy the adults-only atmosphere a half block away from Eagle Harbor. Catch a beautiful sunset or relax by the heated outdoor pool. We are known for clean and comfortable rooms and suites!

[www.villagegreenlodge.com](http://www.villagegreenlodge.com); [relax@villagegreenlodge.com](mailto:relax@villagegreenlodge.com) (See map #45)

## WATERBURY INN \*

10321 Water Street (Hwy. 42).....920-854-2821

The Waterbury Inn is open every day of the year! Centrally located just minutes from everything Door County, let us be your Home Away from Home as you explore Door County all year long. Winter lodging specials, indoor and outdoor pools, free Wi-Fi, fully stocked kitchens in every unit, and a friendly staff to help you explore fabulous Door County!

[www.WaterburyInn.com](http://www.WaterburyInn.com); [waterburyinn.dcwis@gmail.com](mailto:waterburyinn.dcwis@gmail.com) (See map #55)

## WATER STREET INN

9944 Water Street (Hwy. 42).....920-854-2831

Relax and rejuvenate at The Water Street Inn, located on the shores of Eagle Harbor. This recently remodeled historic inn has been "home away from home" for generations of guests. Sit and watch a stunning sunset, cozy up by the fire pit, take a dip in the heated pool, or unwind in the hot tub overlooking the harbor. Centrally located near Ephraim's attractions, it's the ultimate Door County retreat. After a day exploring Door County, retire to their charming rooms all with a waterfront view. The Water Street Inn is simply the perfect place to unwind.

[www.waterstreetinnephraim.com](http://www.waterstreetinnephraim.com); [info@waterstreetinnephraim.com](mailto:info@waterstreetinnephraim.com)

(See map #28)

Credit: Maple Grove Cottage





## BELLA SAILING CRUISES

South Shore Pier.....920-854-2628 or 920-421-0657

We offer a unique sailing experience on a beautiful 26 foot antique sailboat. You'll enjoy seeing charming Ephraim, islands and Peninsula State Park. All trips are 2 hours, affordably priced, maximum 6 passengers. Beverages and food allowed.

(See map #37)

## DOOR COUNTY TROLLEY \*

8030 Hwy. 42, Egg Harbor .....920-868-1100

15 unique Trolley tours to choose from: Scenic tours, Wine tours, Ghost tours, Lighthouse tours and so many more! Join us on a tour and truly experience all that Door County has to offer. We are also available for private rentals including weddings and family reunions! We have a 2,500 sq ft retail section filled with clothes, mugs stickers and other unique gifts. Make it a point to stop by the Trolley Station and see why we're your 'go to' souvenir destination! [www.doorcountytrolley.com](http://www.doorcountytrolley.com); [doorcountytrolley@gmail.com](mailto:doorcountytrolley@gmail.com)

(See map #1)

## EDGE OF PARK RENTALS

4025 Evergreen Road, Fish Creek.....920-868-3344

Located steps from Peninsula State Park trailheads, family owned Edge of Park offers a wide range of bicycle and moped rentals for all ages and abilities. Enjoy popular Sunset Bike Trail or scenic paved roads throughout the Park and surrounding County. Our experienced staff will ensure you find the best routes for you and your family. Rentals include a helmet, lock, map and backpack as well as easy parking and trail access to get you on your adventure in no time!

[www.edgeofpark.com](http://www.edgeofpark.com); [edgeofpark@gmail.com](mailto:edgeofpark@gmail.com) (See map #3)

## EPHRAIM HISTORICAL FOUNDATION

3060 Anderson Lane.....920-854-9688

Visit Ephraim's historic sites, view exhibitions, and participate in special programs for free at the Ephraim Historical Foundation! Explore the village's unique history from the comfort of an open-air tram on guided tours or explore at your own pace. The Ephraim Historical Foundation also houses a robust archival collection that is available for researchers by appointment throughout the year. For hours, tour prices, and more visit [www.ephraim.org](http://www.ephraim.org).

(See map #52)

## EPHRAIM YACHT CLUB

10071 Water Street (Hwy. 42).....Summer Only, 920-854-7107

Learn to sail! The EYC is Door County's family-oriented community sailing center, open June through Labor Day. We offer sailing lessons for children and adults, have several fleets of small one-design sailboats available for member use, and promote amateur sailing competition in Ephraim's beautiful Eagle Harbor. Membership is affordable and open to all.

[www.eyc.org](http://www.eyc.org); [admin@eyc.com](mailto:admin@eyc.com) (See map #50)

Credit: Tad Dukehart







## FISH CREEK SCENIC BOAT TOURS

9448 Spruce Street ..... 920-421-4442  
 Come cruise aboard our 69 passenger partly covered, partly open tour boat docked downtown Fish Creek. We offer daily narrated tours to Eagle Bluff Lighthouse, Peninsula State Park, Millionaire's Row, Eagle Cave, Ephraim, Sister Bay and the many islands, bluffs and beaches surrounding Door County. Our evening sunset cruise offers free live music. Don't miss our special Fireworks cruises scheduled throughout the season.  
 DoorCountyByWater.com; tours@doorcountybywater.com  
 (See map #7)

## MAYBERRY'S CARRIAGE & SLEIGH RIDES \*

Historic Ephraim Village Hall  
 9996 Water Street (Hwy. 42) ..... 920-421-1152  
 See one of the county's most picturesque villages by horse-drawn carriage. Sit back and relax as you view the shoreline, or get lost on the back streets of Ephraim for a quieter time. Open 6-10pm or later, mid-May through October. Reservations are a good idea, walk-ups always welcome. Winter sleigh rides at Orchard Country Winery, half mile south of Fish Creek on Hwy. 42. Open Saturday and Sunday 11am-3pm, some weekdays. Call for reservations.  
 www.MayberrysCarriages.com; John@MayberrysCarriages.com  
 (See map #39)

## PENINSULA STATE PARK GOLF COURSE & RESTAURANT

9890 Shore Road ..... 920-854-5791  
 18-hole classic woodland golf course set in beautiful Peninsula State Park, with majestic views of Eagle Harbor and Ephraim. Great course conditions, driving range, Pro Shop, and the popular Clubhouse Restaurant. Lunch served daily May through mid-October 10:30am - 2pm. Now offering beer and wine at the clubhouse. No park sticker required. Tee times and twilight rates available daily.  
 www.PeninsulaGolf.org; info@peninsulagolf.org (See map #12)

## PENINSULA STATE PARK SHORT COURSE & DRIVING RANGE

Short Course: 3296 Holand Road ..... 920-854-5791  
 Driving Range: 9795 Water Street (Hwy. 42) ..... 920-854-5791  
 Peninsula State Park Golf Course now has a 6-hole par three short course open for play. The course along with a full service driving range provide golfers of all abilities a place to practice and play the game in a non-intimidating environment. All fees are \$10 or less. Clubs are available for rent. Professional instruction is available.  
 www.PeninsulaGolf.org; info@peninsulagolf.org (See map #13/#14)

## RED PUTTER MINI GOLF

10404 Water Street (Hwy. 42), North Ephraim ..... 920-615-4787  
 Celebrating 50 years of classic mini golf and affordable family fun! Traditional 18-Hole miniature golf course with many challenging obstacles. Well known for our reasonable rates! After your game, relax at our picnic area and Bobby's Playground. Practice your skills and join us for the Red Putter Pro Tournament, held the first Saturday in August. It's "Where the Pros Play!" Open daily 10am-10pm May through October.  
 redputterminigolf@gmail.com (See map #65)

## SEGWAY THE DOOR TOURS \*

3903 Hwy. 42, Fish Creek ..... 920-376-0256  
 Guided Segway Tours where you want to experience the beauty of Door County! Choose your guided tour: Amazing Views of Peninsula State Park, Lighthouses of Baileys Harbor, Cherry Orchards of Ellison Bay, Prehistoric Cave Point & Whitefish Dunes, Half-Day Washington Island, Sister Bay Village, Fish Creek Town, or Sturgeon Bay Canal City. You will have a great time!  
 www.GlideNEW.com; GlideNEW@gmail.com (See map #5)



## ACTIVITIES & ATTRACTIONS

### SHORELINE BOAT TOURS

120 N Madison Avenue, Sturgeon Bay  
8132 Hwy 57, Baileys Harbor.....920-854-4707

Welcome Aboard our scenic and wonderfully narrated tours! Two beautiful locations, Baileys Harbor and Sturgeon Bay! Baileys Harbor Day Package: 2 hour boat tour includes entrance fee to the top of the magnificent Cana Island Lighthouse and the Natural Environs of the Ridges Sanctuary. Sturgeon Bay Day Package: 2 hour boat tour includes entrance fee into the impressive Maritime Museum and the stunning 10 story Kress Tower. Get out on the water and make life long memories with your family!  
[www.doorcountyboats.com/sister-bay-scenic-boat-tours/](http://www.doorcountyboats.com/sister-bay-scenic-boat-tours/);  
[tours@doorcountyboats.com](mailto:tours@doorcountyboats.com) (See map #35)

### SISTER BAY SCENIC BOAT TOURS

10707 N. Bay Shore Drive, Sister Bay.....920-421-4444

Get out on the water TODAY! Choose a narrated cruise to see Peninsula State Park and the islands around or a cruise north to Death's Door. The narration is informative and entertaining! There is also a live music sunset cruise that you can enjoy. Tours available Monday-Saturday. You haven't seen Door County until you have seen it from the water!  
[www.doorcountyboats.com/sister-bay-scenic-boat-tours/](http://www.doorcountyboats.com/sister-bay-scenic-boat-tours/);  
[tours@doorcountyboats.com](mailto:tours@doorcountyboats.com) (See map #71)

### SKYWAY DRIVE-IN THEATRE

3475 Hwy. 42  
Between Ephraim & Fish Creek.....920-854-9938

Named America's #1 drive-in by TripAdvisor! Enjoy Hollywood's latest movies in a nostalgic, wooded setting. Door County's entertainment bargain since 1950. Double features. First movie begins at dusk. Radio sound. Snack Bar featuring foot-long hot dogs, pizza, nachos, soft pretzels, ice cream and fresh popcorn with real butter. Open weekends in May, September and October; nightly June through Labor Day.  
[www.DoorCountyDriveIn.com](http://www.DoorCountyDriveIn.com); [skywaydriveintheatre@yahoo.com](mailto:skywaydriveintheatre@yahoo.com)  
(See map #6)

### SOUTH SHORE PIER BOAT RENTAL

9993 Water Street (Hwy. 42).....920-854-4324

Rent a family-size pontoon boat and view the beautiful Door County shoreline. Go jet skiing on a Waverunner. Explore Eagle Harbor on a paddleboat. Located in the heart of Ephraim, across from Wilson's Restaurant & Ice Cream Parlor. Call for reservations Memorial Day weekend through Labor Day.  
[www.SouthShorePier.com](http://www.SouthShorePier.com) (See map #37)

Credit: Segway The Door





## COLIN & FRIENDS CONCERTS \*

P.O. Box 248, Ephraim ..... 646-210-7171

'Colin & Friends Concerts' is a series of live musical events led by internationally-acclaimed musician Colin Welford. Our aim is to share a variety of classical music (along with other styles) at a very high standard, but in a fresh way – and to welcome everyone. For this reason, our concerts are free to attend, and are family-friendly, relaxed, educational – and fun! Visitors and locals alike attend our concerts and other musical events in almost every month. Please join our mailing list!

colinandfriendsconcerts@gmail.com

## DOOR COMMUNITY AUDITORIUM \*

3926 Hwy. 42..... 920-868-2728

Door Community Auditorium (DCA) is Door County's year-round, indoor venue for the arts, entertainment, cultural opportunities, exhibits, and community events. DCA hosts a diverse mix of professionals, community groups, regional talent, and student artists. In recent years, our stage has been graced by the likes of Lyle Lovett, Buddy Guy, The Beach Boys, The Lumineers, Melissa Etheridge, Ira Glass, Ziggy Marley, Charlie Daniels, Joan Baez, and Mavis Staples. DCA is supported by visitors and residents through ticket sales, charitable giving, and volunteerism.

www.dcauditorium.org; boxoffice@dcauditorium.org (See map #4)

## NORTHERN SKY THEATER \*

Outdoor Park Amphitheater: 10169 Shore Road, Fish Creek  
Ticket Office & Indoor Gould Theater

9058 County Road A, Fish Creek..... 920-854-6117

NorthernSky is a must-see Door County theater experience: original musicals presented beneath stars and towering pines in Peninsula Park Amphitheater, as well as indoors at the intimate, state-of-the-art Gould Theater. No matter the venue, Northern Sky is "as much a Door County tradition as cherry preserves...one of the most exceptional professional troupes in the country" (Chicago Tribune).

www.northernskytheater.com; info@northernskytheater.com (See map #8)

## PENINSULA MUSIC FESTIVAL \*

10431 N. Water Street (Hwy. 42)..... 920-854-4060

Celebrating its 72nd season of excellence in classical music, this 80 piece professional orchestra gathers from around the world each August. We perform exceptional concerts among the beautiful acoustics of the Door Community Auditorium in Fish Creek. Come join us for an evening as our conductor, Rune Bergmann, transforms these world-class musicians into a spellbinding orchestra you will not forget!

www.musicfestival.com; musicfestival@musicfestival.com (See map #70)

## PENINSULA PLAYERS THEATRE

4351 Peninsula Players Road, Fish Creek..... 920-868-3287

Door County's premiere professional theatrical treasure presents Broadway-quality comedies, dramas and musicals in an enchanting shoreline setting. Delight in the entire Peninsula Players Theatre experience – impressive artistic talent, tranquil Beer Garden and warming intermission bonfire. Arrive early and see why patrons have made this Door County experience a "must-do" for almost nine decades. Performances are held Tuesdays through Sundays, June 18 through October 20, 2024.

www.peninsulaplayers.com; tickets@peninsulaplayers.com (See map #2)

Credit: Len Villano/Peninsula Players Theatre





## SHOPS

### AUNT VELMA'S HOUSE'N HEART

9922 Water Street (Hwy. 42)  
Shorewood Village Shops.....920-854-2483

This shop is a must see when you are in Door County. We offer items for you and your home and garden. Ephraim and Door County t-shirts, sweatshirts and caps. Lodge, lighthouse, handmade items, souvenirs, gifts, and more. Open May though October.  
(See map #21)

### BEACH PEOPLE EPHRAIM \*

9930 Water Street (Hwy. 42).....920-854-7757

A fun family gift shop for all ages. Featuring custom Door County apparel, gifts, toys, housewares, summertime jewelry. Fun outdoor toys and stuffed animals featured in the kids' room, filled with items to make the vacation even more fun than it already is.  
www.BeachPeopleDC.com (See map #26)

### DOOR COUNTY PIGGLY WIGGLY \*

10576 Country Walk Drive, Sister Bay.....920-854-2391

Nearly 23,000 square feet of produce, bakery, deli, dairy, frozen foods, meat, liquor, wine and beer sections! Featuring full deli & catering, certified angus beef, fresh & local produce, in-store bakery and custom cakes. Full liquor, wine & beer sections. Talk to us about catering your next occasion! Open 7:00 am-8:00 pm daily, call for winter hours.  
www.ShopthePig.com; pigglywigglysb@gmail.com (See map #76)

### DOOR COUNTY ROCK & GEM \*

Hwy. 42 North Ephraim.....920-854-3667

Come and experience Door County's most unique shop. Crystals, Minerals, Jewelry, Décor, Fossils and Fun. Shoppers, rock hounds, scientists, healers and kids of all ages will find breathtaking selections. Now with 2 stores; Fish Creek and North Ephraim. Bring the family to our sluice box mining fun in North Ephraim.  
www.doorcountyrockandgem.com; scott@doorcountyrockandgem.com  
(See map #66)

### THE GREAT OUTDOORS \*

9932 Water Street (Hwy. 42).....920-854-5215

Whether you're here for the water, beach or the woods, The Great Outdoors has you covered. The best original custom designs in Door County for apparel, gifts, artwork, and home decor. Inspired items and artwork for love of nature and our beautiful state and local outdoor places. Stop in, you will love it! Shopping made fun for the entire family!  
(See map #27)

### ISLAND LAVENDER COMPANY \*

10432 N. Water Street (Hwy. 42).....920-737-1531

Experience the midwest's largest lavender market featuring home, beauty, bath, pet and artisan food products. Sample lavender soaps and lotions and taste handmade lavender chocolates, jams and ice cream made with locally grown lavender. Learn the art of lavender growing and essential oil distillation. Watch artist presentations making lavender products. Open daily 10-5, April - December and 10-4 Friday - Sunday, January - March. Experience all things lavender at our website marketplace with free shipping!  
www.islandlavender.com (See map #68)

### THE SIMPLE SOLUTION \*

10331 N. Water Street (Hwy. 42).....920-854-3336

At The Simple Solution, we bring our Estate sales and consignment together under one roof. A mix of furniture and home decor, both vintage and contemporary. We bring in new items daily. Twice a year, we hold a small, curated vintage market. This year the dates are July 13th and September 14th. You will not want to miss this event. New to The Simple Solution this year, is our LG appliance area. We are in north Ephraim, stop in and see us!  
thesimplesolutiondoco@gmail.com (See map #59)



## VINTIQUE ✨

10254 Water Street (Hwy. 42).....920-854-8060

Vintage offers delightful in-style home decor and curated vintage finds. Enjoy our ever-changing inventory and seasonal palette, as the shop is constantly shifting. Pick out unique gifts and one-of-a-kind creations by local Door County artisans. Step through this iconic turret in Ephraim for a can't miss retail experience. We're conveniently located on Hwy 42!

Vintiqueresale.com; bholm@vintiqueresale.com

(See map #54)

## ZABLER DESIGN JEWELERS

9906 Water Street (Hwy. 42).....920-854-4801

Framed by the waters of Eagle Harbor, the Arts and Crafts architecture of our seasonal store in Ephraim has the finest jewelry in Door County, Wisconsin. Specializing in engagement rings in pink and yellow diamonds. Rare gems like Alexandrite, Tsavorite, Tanzanite, and Padparadscha Sapphire. Period 1920's white gold and platinum filigree. Genuine ancient Greek & Roman coins in original designs. Open Memorial Day through late October.

www.zablerdesign.com; zablerdesign@gmail.com

(See map #19)

Credit: Vintique





## ARTZY STUDIO

10329 Water Street (Hwy. 42).....608-438-7633

Collectible Art, Antiques, and Shabby Chic in a beautiful butterfly garden setting. Featuring original jewelry, ceramics, glass and paintings by Cynthia L. Koshalek. Owl Art by Clarence P. Cameron. Stained Glass by Norma Hove. Jewelry by Kerri Shannon. Garden Art & Sculpture, Blenko Glass, Home Decor, Scarves, Linens, and Paris Items. "A little bit of Paris in Door County". Open 10:00 a.m. to 4:00 p.m. Thursday through Monday.

Facebook: Artzy; clkartist@gmail.com; Instagram: clkartist2017

(See map #57)

## BALISTRERI FINE ART

9727 Maple Grove Road.....414-534-8017

Welcome to Balistreri Fine Art located in Door County's historic village of Ephraim. Watch for the wood and stone Ephraim Sign on the south end of town on Hwy 42 and your there. Balistreri Fine Art features Paintings, Drawings, Sculpture, Photography, Prints and Gifts all of which are created by owner, artist, John Balistreri. John works in a variety of styles, techniques and mediums which provides a great selection and ensures there is something for everyone. High quality Fine Art to add to your collection, decorate your home or office, or both.

balistrerifineart@gmail.com; www.jabfineart.com

(See map #10)

## FINE LINE DESIGNS GALLERY & SCULPTURE GARDEN \*

10376 Water Street (Hwy. 42).....920-854-4343

Fine Line Designs Gallery is housed in a renovated 1950s chicken coop and today operates in a beautiful multi-level space. The gallery features original paintings, glass, jewelry, clay, custom wood furnishings, sculpture and fiber rich in color and texture created by more than 90 acclaimed artists. Unique gifts and collectable artworks can be found indoors and out.

www.FineLineDesignsGallery.com;

finelinedesignsartgallery@gmail.com

(See map #61)

## HARDY GALLERY

3083 Anderson Lane.....920-854-5535

Situated on the picturesque shoreline of Eagle Harbor, the non-profit Hardy Gallery provides truly unique experiences that enrich the cultural fabric of Door County. Take in an exhibit, learn about the artisans who live and work on the peninsula or simply enjoy a spectacular sunset. Visit us and you'll see why we are known as the premiere destination for learning about the visual arts and artists in Door County!

www.TheHardy.org; info@thehardy.org

(See map #53)

Credit: Fine Line Designs Gallery & Sculpture Garden





## ANATOLIA CUISINE DC

9922 Water Street, Unit 7 .....773-999-1539

Step into a world of Mediterranean delights at Anatolia Cuisine DC, your new culinary oasis in Ephraim. It's like being on vacation, but without the long flight. From savory kebabs to seafood delicacies, every bite transports you to a busy market or a cozy cafe by the water. Our menu offers a variety of choices including appetizers, grilled dishes, and seafood specialties, all crafted to delight your palate. Come dine with us and enjoy the wonderful experience of Mediterranean food.

<https://www.anatoliacuisinedc.com/>; [anatoliacuisinedc@gmail.com](mailto:anatoliacuisinedc@gmail.com)

(See map #22)

## CHEF'S HAT CAFÉ ✱

3063 Church Street (Hwy. Q) .....920-854-2034

Whether looking for traditional homemade comfort foods or fresh unique new edge inviting foods, we have it all. Chef's Hat Café prides itself on quality fresh, locally sourced ingredients with that special twist. Outdoor seating on our patio. Serving breakfast, lunch and dinner, with spectacular views of Eagle Harbor and Peninsula State Park. Stop down and join us for fresh, homemade quality food with a view.

[www.ChefsHatDoorCounty.com](http://www.ChefsHatDoorCounty.com); [Tbkayak2@hotmail.com](mailto:Tbkayak2@hotmail.com) (See map #40)

## CULTURED ✱

2570 County Q, Sister Bay .....215-589-3047

A sourdough bakery specializing in bagels, bread, and fermented goods like sauerkraut and kimchi. Serving drip coffee and bagel sandwiches. Outdoor seating available. Check out [culturedc.getminimart.com](http://culturedc.getminimart.com) or Instagram or Facebook @culturedsourdough for more information.

[cultured.dc@gmail.com](mailto:cultured.dc@gmail.com) (See map #33)

## GOOD EGGS

9820 Brookside Lane

Good Eggs specializes in breakfast burritos. Customers can wait in line to order in person and pay in cash or they can order with a simple App and pick up their food at a prescribed time. All food is wrapped to travel but a menagerie of cleverly conceived pick nick tables provide a garden like dining experience with a water view. Open; May to October. Seven to One, Seven days a week (less in spring and fall.)

(See map #15)



## KLAUD'S KITCHEN INC ✱

10420 N. Water Street (Hwy. 42) .....920-854-3005

Welcome to Klaud's Kitchen—our little slice of heaven. What started as an idea to reopen the beloved coffee shop has blossomed into an incredible adventure! When we launched in June 2023, our menu consisted of a few lattes and sandwiches. Since then, our menu has expanded to include monthly-rotating specialty lattes, an assortment of pizza, breakfast sandwiches & burritos, lunch options & burgers, weekly food specials, and a fully-stocked bakery case. We hope to see you soon!

<https://klaudskitchen.com/>; [info@klaudskitchen.com](mailto:info@klaudskitchen.com) (See map #67)

## OLD POST OFFICE RESTAURANT

10040 Water Street (Hwy. 42) .....920-854-4034

Overlooking beautiful Eagle Harbor. Enjoy a Door County fish boil in our historic setting. Featuring fresh whitefish (chicken and ribs available), potatoes, onions, coleslaw, homemade breads and cherry pie. Fish boils are served Monday through Saturday, reservations requested. Homemade breakfasts served daily, featuring cherry and blueberry pancakes, fluffy omelets, Belgian waffles, homemade coffeecake and cherry muffins. Offering craft beer and select wine. Open May through October. Outdoor patio seating available.

[www.OldPostOffice-DoorCounty.com](http://www.OldPostOffice-DoorCounty.com) (See map #48)



# RESTAURANTS

## PEARL WINE COTTAGE

3058 Church Street.....920-633-5006

Pearl Wine Cottage is nestled in the heart of Ephraim in a cheerfully renovated, 100-plus-year-old building. Imbued with genuine warmth, this family-run wine bar is inviting and casual. From sparkling whites to full-bodied reds, enjoy a selection of wine from around the world. And sample a petite, seasonal food menu featuring both local and international delights. Cheers!

[PearlWineCottage.com](http://PearlWineCottage.com); [hello@pearlWineCottage.com](mailto:hello@pearlWineCottage.com) (See map #43)

## PRINCE OF PIEROGI RESTAURANT

9922 Water Street, Unit 6 .....920-421-8619

Visit the most authentic Polish restaurant in Wisconsin! We offer a variety of savory and sweet Pierogi, stuffed Cabbage Rolls, Hunter's Stew and Smoked Kielbasa Dogs paired with authentic Polish and domestic beer or wine. Vegan and gluten-free options available. Try our homemade comfort food that is better than your Polish grandma's! Fastest service and the most reasonable pricing.

<https://www.princeofpierogi.com>; [contact@princeofpierogi.com](mailto:contact@princeofpierogi.com) (See map #23)

## SERGIO'S MEXICAN STREET FOOD

9890 Shore Road (Food Truck).....920-410-1705

Mobile Food Truck serving tacos, burritos, quesadillas, and tortas made with fresh ingredients. Whether a long-time fan of Mexican cuisine, or just looking for a great meal, our signature dishes are sure to leave you satisfied. Check our social media for location.

<https://www.sergiosmexicanfood.com>; [sergiosmexicanstreetfood@gmail.com](mailto:sergiosmexicanstreetfood@gmail.com) (See map #11)

## SIP \* ❄️

10326 N. Water Street (Hwy. 42).....920-857-5602

Sip offers bright, colorful, and fresh food, specialty coffees, daily specials, smoothies, and a rotating beer & wine list. Serving breakfast, lunch, and dinner. Daily, year round. Come in and Sip with us!

[coffee@sipdoorcounty.com](mailto:coffee@sipdoorcounty.com) (See map #56)

## SUMMER KITCHEN RESTAURANT

10425 Water Street (Hwy. 42).....920-854-2131

Door County's garden restaurant! The Summer Kitchen is open April through October, serving breakfast, lunch and dinner during peak season. Please try our famous soup bar, featuring five homemade soups with homemade bread. We also offer salads, sandwiches and homemade pies. Buses welcome. Featuring early bird specials for breakfast. Serving authentic Mexican dishes, homemade cherry sangria, wine & beer.

Patio dining! Gluten free and vegetarian options available.

Like us on Facebook.

[www.TheSummerKitchenDoorCounty.com](http://www.TheSummerKitchenDoorCounty.com) (See map #69)

Credit: Klaud's Kitchen







## SUNSET HARBOR GRILL

10018 Water Street (Hwy. 42).....920-854-6565

Enjoy Ephraim's dining experience with the best waterfront view in Door County! Watch the extravagant Eagle Harbor sunset while you dine! Offering homestyle breakfast, lunch, and dinner, including pancakes, omelets, sandwiches, burgers, salads, fresh fish, pasta, and steak. Located on the second floor of Ephraim Shores Resort in beautiful downtown Ephraim. Open May-October.  
(See map #44)

## TRIXIE'S

9996 Pioneer Lane.....920-854-8008

Trixie's is a small wine bar located just behind the historic Ephraim Village hall. Our focus is on providing beautiful food and wines in a casual, fun atmosphere. Our menu consists of dishes made from locally sourced, sustainably grown ingredients and our wine list is focused on low intervention, sustainable, organic, biodynamic, and female-made wines.  
[www.trixiesfoodandwine.com](http://www.trixiesfoodandwine.com) (See map #41)

## WILSON'S RESTAURANT & ICE CREAM PARLOR

9990 Water Street (Hwy. 42).....920-854-2041

Wilson's Restaurant and Ice Cream Parlor has been located in the heart of Ephraim across from Eagle Harbor since 1906. A classic Door County landmark that possesses the enchantment to take the youngest visitors back in time with our old-fashioned soda fountain, ice cream specialties, home-brewed draft root beer, flame broiled burgers and juke boxes playing the classics. Whether you're looking to enjoy lunch, dinner or grab an ice cream cone before enjoying an Ephraim sunset, Wilson's is a must during your Door County vacation! ATM available.  
[www.WilsonsIceCream.com](http://www.WilsonsIceCream.com) (See map #36)

Sergio's Mexican Street Food



\* OPEN YEAR-ROUND



# SERVICES

## ARBOR CROWNE PROPERTIES \*

9980 Water Street (Hwy. 42).....920-854-3272

Whether it's finding your dream Door County home or listing your current property, Arbor Crowne Properties' dedication and experience will prove invaluable in this competitive market. They want to sell your home for the highest possible price, in the shortest amount of time, and with the most favorable terms. As a buyer, they will listen to your needs, get to know your wish list, and will help match you with the best house, cottage, or condo for you. Diane and her team specialize in waterfront and premier peninsula properties and will calmly and expertly guide you through your real estate search, purchase, or sale. Let us take care of everything.

www.arborcrowneproperties.com;  
diane@arborcrowneproperties.com (See map #29)

## DAVID INSURANCE, A VIZANCE COMPANY \*

10589 S. Highland Road.....920-854-2387

The Professional Center, Sister Bay

An independent insurance agency providing service for your business, home, auto, life and health. Open Mon - Thurs, 8:30 am - 5:00 pm, Friday, 8:30 am - 4:00 pm or by appointment.

www.davidinsurance.com; dc@davidinsurance.com (See map #73)

## DOOR COUNTY MEDICAL CENTER \*

323 S. 18th Avenue, Sturgeon Bay.....920-743-5566

Primary care, behavioral health, diabetes education, OB/GYN, orthopedic services and podiatry services available at our Sister Bay location. Rehab services available including physical therapy, occupational therapy and massage therapy. Same day appointments available for patients requesting to see a primary care provider. In addition, The Regional Cancer Collaborative provides cancer care to patients at the Door County Cancer Center located on the hospital's main campus in Sturgeon Bay. Prevea After Hours is available 24/7 by calling 920-405-1415 to speak with a registered nurse. Visit us at dcmedical.org for more information.

(See map #77)

## DOOR GUIDE PUBLISHING \*

Office: 2584 S. Bay Shore Drive, Suite A,  
Sister Bay .....920-854-5555

Publisher of the *Door County Go! Guide*, a pocket-sized guidebook, and the *Door County Dining Guide*, featuring restaurant menus. Home of Door County Digital LLC, offering a full range of social media and digital marketing services, plus high-end video production. The Door County TODAY website (doorcounty.net) is a popular online magazine.

info@doorguidepublishing.com (See map #72)

Credit: Luke Collins





## EPHRAIM MORAVIAN CHURCH ✱

9970 Moravia Street.....920-854-2804

The Ephraim Moravian Church is Door County's oldest church, established in 1853 by Rev. Andreas Iverson. The denomination is the oldest Protestant denomination, founded in 1457 in the Czech Republic. The Moravian motto is, "In Essentials Unity; in Non-Essentials Liberty; in All Things, Love." Services are 10:30 a.m. on Sundays.

[www.EphraimMoravian.org](http://www.EphraimMoravian.org); [worship@ephraimmoravian.org](mailto:worship@ephraimmoravian.org) (See map #30)

## EPHRAIM VISITOR INFORMATION CENTERS ✱

10049 Water Street (Hwy. 42).....920-854-4989

Ephraim's waterfront visitor information center provides all the maps, brochures, event calendars, and vacation guides to make your Door County vacation unforgettable. Ephraim and Fyr Bal merchandise is also available. Public Wi-Fi. The Visitor Information Center is open May through October. The winter Visitor Information Center is located in Ephraim Village Hall at 9996 Water Street (Hwy. 42) and is open by appointment.

[www.ephraim-doorcounty.com](http://www.ephraim-doorcounty.com); [vacation@ephraim-doorcounty.com](mailto:vacation@ephraim-doorcounty.com)  
(See map #49-Summer & #38-Winter)

## FM 106.9 THE LODGE WLGE ✱

10331 Water Street (Hwy. 42).....920-746-1069 or 920-854-3400

Tune in to 106.9 FM and 93.3 FM for world-class rock tailored to the Door County lifestyle. Take Door County with you – in the car, on trails, or at the beach – download the app and listen on any device!

[Fm1069thelodge.com](http://Fm1069thelodge.com) (See map #58)

## INNOVATIVE PRINTING ✱

2414 Country Walk Drive, Sister Bay.....920-854-2662

Graphic design, printing, your one stop print office.

[www.innovativeprintingllc.com](http://www.innovativeprintingllc.com); [artdept@innovativeprintingllc.com](mailto:artdept@innovativeprintingllc.com)  
(See map #74)

## NICOLET NATIONAL BANK ✱

2477 S. Bay Shore Drive. (Hwy. 42), Sister Bay.....920-854-2326

Every great success story starts with a conversation. We invite you to talk with our local experts in personal and business banking, home loans, commercial banking, and wealth management. 24 hour drive up ATMs accepting Nicolet Bank deposits at Fish Creek, 4097 Hwy 42 and Nicolet Bank – Sister Bay. Member FDIC. Equal Housing Lender. NMLS ID# 411069. SBA Preferred Lender. [www.nicoletbank.com](http://www.nicoletbank.com) (See map #75)

Credit: Luke Collins





Photo by: Luke Collins Photography

[WWW.EPHRAIM-DOORCOUNTY.COM](http://WWW.EPHRAIM-DOORCOUNTY.COM)