



WELCOME

# to Ephraim



Credit: Forty Three 6

Picturesque Ephraim is a village that respects tradition, yet holds surprises for all tastes. From the moment you enter Ephraim, you will be in awe of the natural beauty of the shoreline against the bluffs and iconic white buildings. Ephraim is a must-see on any Door County vacation.

Settled in 1853 by the Norwegian Moravians in the heart of the Door County peninsula, the rich history of Ephraim has been preserved in more than thirty historical sites. Jump on the Ephraim Historical Foundation tram or take a walking tour to travel back through history and experience Ephraim's storied past.

The breathtaking shoreline enhances the charm of the village. Views of Eagle Harbor can be experienced by land or water. Both provide equally stunning panoramic views of Peninsula State Park, which forms Ephraim's southern boundary. Ephraim sunsets are second to none—the perfect ending to an authentic Door County experience.

Ephraim offers a wide variety of accommodations to fit everyone's vacation needs. From family-friendly resorts to quaint boutique hotels and cozy cottages, Ephraim has the right space to let you unwind and relax in comfort. As you settle in, take a walk to nearby shops and galleries and be dazzled by the wide array of fine art, jewelry, home décor, and many other Door County treasures.

Ephraim has a vibrant, innovative culinary scene. Whether you crave an amazing meal, an authentic Door County fish boil, or a tasty ice cream treat, you'll find Ephraim has the perfect place for you. A visit to Ephraim guarantees great vacation memories!

# Ephraim

## Events

Fyr Bal: Spring Into Summer Festival . . . . .	5
Evenings in Ephraim Bondemarked . . . . .	7
Evenings in Ephraim Concerts . . . . .	9
Christmas in the Village . . . . .	10

## Experience

Social Media . . . . .	3
Beach, Park & Marinas . . . . .	11
Nature & Outdoors . . . . .	12
Peninsula State Park . . . . .	14

## Maps & Resources

Ephraim Walk Path Guide . . . . .	13
Ephraim Map . . . . .	Foldout Map
Door County Map . . . . .	Foldout Map
Ephraim Historical Sites . . . . .	15
Community Resources . . . . .	16
Visitors Center . . . . .	16
Peninsula State Park Map . . . . .	16

## Ephraim Walk Path Guide

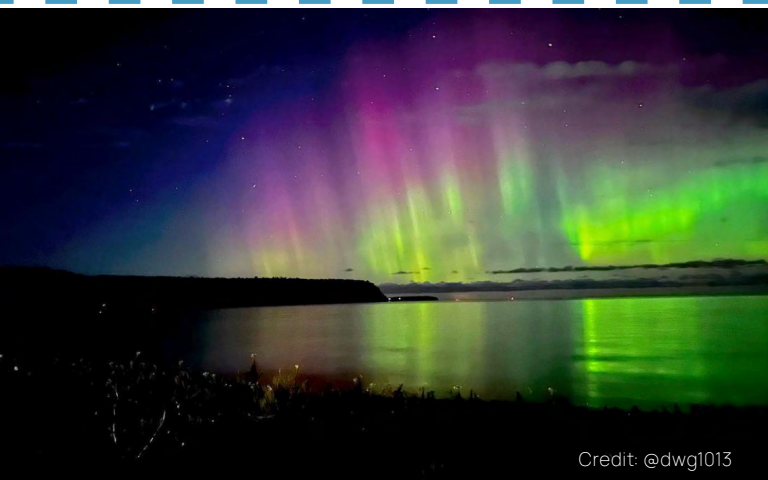
A popular route through Ephraim runs from the Wetlands Preserve to Anderson Dock and eastward. The Ephraim Walk Path Guide is located on page 13.



## Businesses

Accommodations . . . . .	17
Activities & Attractions . . . . .	21
Performing Arts . . . . .	24
Shops . . . . .	25
Galleries . . . . .	27
Restaurants . . . . .	29
Services . . . . .	31

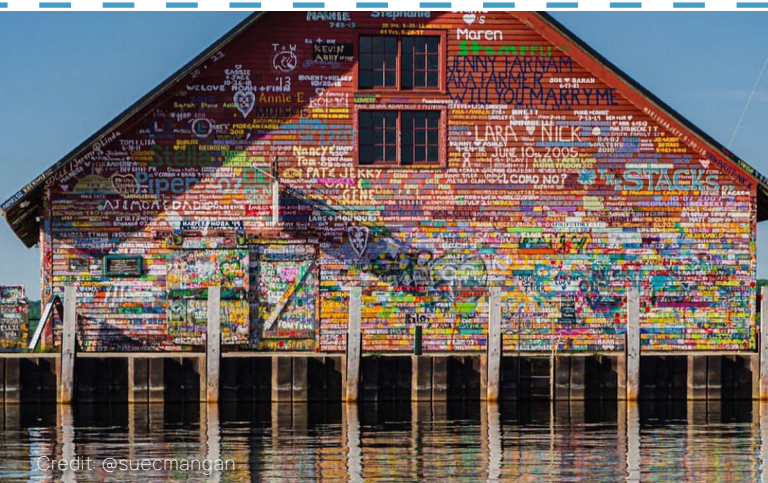
# What Will You See?





Facebook  : Ephraim - Door County, Wisconsin

Instagram  : ephraim\_wi





SATURDAY, JUNE 17, 2023



Credit: Tad Dukehart

Welcome summer in the beautiful village of Ephraim! Embrace the village's Scandinavian heritage with a fun-filled day of music, activities, food, and artisans. As the sun sets, the grand bonfire is lit to welcome the long days of summer. The festival draws to a close with a dramatic fireworks display over Eagle Harbor.

Visit our website for more details.



Credit: Tad Dukehart





Credit: Tad Dukehart

# Sponsors



Come and enjoy your evening  
in Ephraim with our new  
evening outdoor market!!

Visit Bondemarked, which is Norwegian  
for “farmers market.” Peruse the many  
goods from local vendors and artisans in  
the beautiful north end of Ephraim then  
head downtown to our weekly concert.

Mondays 4-7pm from  
June 19 - August 28 (except July 3)  
Open grass lots adjacent to  
the Red Putter







## Sponsors

ANDERSON HOUSE  
Shop & Gallery





## 2023 CONCERT SCHEDULE

After visiting the market in north Ephraim, join us every Monday at the gazebo in Harborside Park from 6-8pm to celebrate local musicians. Relax and enjoy the music with friends and family while enjoying the beauty of Ephraim. Bring a chair or blanket and stay for the sunset!

Rain location is Ephraim Village Hall.

Please call 920-854-4989 or check Facebook for updates.

**JUNE 19 - EDDIE LARSEN'S CLASSIC MEMORIES BAND** A nine-piece band who performs the best of swing, oldies, country, and polkas is sure to entertain! Enjoy the sounds of their various instruments and vocals as they play the sounds of your favorite memories.

**JUNE 26 - TALK OF THE TOWN** The six-piece group consisting of Clarinet/ Saxophone, Trumpet, Trombone, Bass, Piano, and Drums has collectively over 300 years of experience. They are one of the hottest Dixieland/Swing Style Jazz Groups north of New Orleans. Their leader, Kevin, has not only performed several times on Bourbon Street in New Orleans but also on the lead float in the Mardi Gras Parade in New Orleans.

**JULY 3 - JEANNE KUHNS & GEORGE SAWYN** The duo brings nostalgic songs that span the decades to life. With George's mad guitar skills and Jeanne's vibrant vocals, they perform their take on Irving Berlin, Cole Porter, Joni Mitchell, Prince and many others including their originals.

**JULY 10 - ERIN KREBS QUARTET** Fronted by dynamic Jazz Vocalist Erin Krebs, the Quartet will showcase Erin's original music and unique arrangements of classics from the Great American Songbook in a variety of Jazz & Blues styles.

**JULY 17 - MIGHTY MOUTH** Members of Mighty Mouth have toured about, recorded with blues legends, had a song in a Bollywood movie, and played Lambeau Field.

**JULY 24 - LEWIS AND MURPHY** Singer songwriters, recording artists and multi-instrumentalists, entertaining Door County music lovers for the last five years as members of the Cherry Pickers and recently as a duo. Set lists include like-able favorites by lovable artists, from Hank to Hendrix, with blends of tempo, genre and style.

**JULY 31 - SPIKE & APRIL** Door County based duo Spike and April play songs that they like from many influences like jazz, swing, blues, rock and their own quirky originals. Music veterans Mike (Spike) Judy on guitar/voice and April (April) Pate on drums/voice create a laid-back mood filled with great songs.

**AUGUST 7 - ZACHARY SCOT JOHNSON** Zachary Scot Johnson is a nationally touring singer/ songwriter and has a well known YouTube channel called thesongadayproject, where he's recorded a song a day for over 3500 days and 10 full years. thesongadayproject has over 42 million views and collaborations with over 300 well known artists, including Donovan, Shawn Colvin, Rosanne Cash, Jeff Daniels, Rodney Crowell, Creed Bratton and many others.

**AUGUST 14 - ZEPHYR CIESAR** Door County's own Zephyr Ciesar is a singer-songwriter with a magnetic presence and soulful sound. She breathes new life into classics and covers some of her favorite contemporary artists. This wide array of inspiration is what drives her own original music.

**AUGUST 21 - SETH & MB** Seth & Mb perform eclectic covers and original tunes from indie-folk to country featuring slick guitar licks and sweet harmonies.

**AUGUST 28 - KATIE DAHL WITH SPECIAL GUEST ERIC LEWIS** Singer-songwriter Katie Dahl is a Door County favorite who performs her smart, original folk music across the country. She is joined by upright bassist Rich Higdon and Memphis multi-instrumentalist Eric Lewis.

# CHRISTMAS

## IN THE VILLAGE

SATURDAY, DECEMBER 2, 2023



Santa Claus will be in Ephraim with his reindeer and elves on December 3 and bringing lots of holiday cheer! Visit our website for details of the day's activities.

## Sponsors





## Anderson Dock Marina

This marina can be found at 3083 Anderson Lane, also the site of the historic dock warehouse well-known for its boat name graffiti. The warehouse is the longtime home of the Hardy Gallery. Seasonal and transient slips are available for rental, with upgraded electrical at each slip. Fishing is permitted off the pier. Parking available.

Credit: DDC/Mike Tittel



## Firehouse Dock & Marina

Named for the historic firehouse built into the hill just across the highway, Firehouse Dock and Marina is Ephraim's primary marina, with both permanent and transient boat slips available. Offsite trailer parking at 1011 Norway St. (no overnight) & 10285 Townline Rd. (long & short-term).

Credit: DDC/John Nienhuis



## Ephraim Beach

The Village maintains a 175-foot span of public sand beach at 9877 Water Street (Hwy. 42), with parking, rest rooms, foot wash and drink machine.

Credit: DDC/Mike Tittel



## Harborside Park

The park features playground equipment, benches and picnic area, public parking and a beautiful view of the bay. The Harborside Park gazebo is a perfect spot to enjoy Door County sunsets and our weekly summer Evenings in Ephraim concert series with family and friends.



Credit: DDC/Dan Eggert



Credit: DDC/Mike Tittel



## Cherry Street Steps

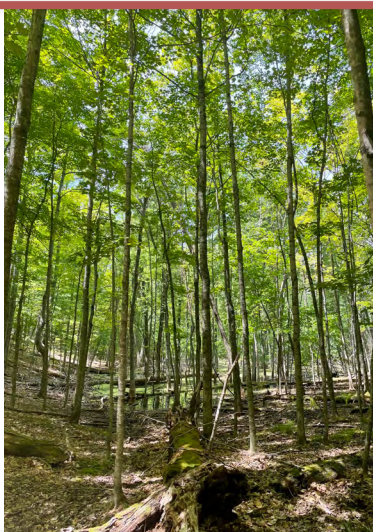
Get a new perspective of Ephraim, Eagle Harbor, Peninsula State Park, and Horseshoe Island from the viewing platform at the top of these steps adjacent to Harborside Park. You may recognize the view from some of our most popular social media posts. Tag #cherrystreetsteps in your photos!

## Wetlands Preserve

A rustic entrance at 9820 Water Street (Hwy. 42) leads to two looped trails through seven acres of a regenerating wetland ecosystem. Parking available.

## Ephraim Preserve at Anderson Pond

Purchased by the Door County Land Trust from the Anderson family, these 27 acres with entrance off Moravia Street will forever retain the pond, woods, wildlife and natural beauty for all residents and visitors to enjoy.



Credit: DDC/Dan Eggert

## Sunset Times

Times the sun sets on the first and last day of each month.

January .....	4:17 - 4:55pm
February .....	4:46 - 5:35pm
March .....	5:36 - 7:15pm
April .....	7:17 - 7:53pm
May .....	7:55 - 8:28pm
June .....	8:29 - 8:40pm
July .....	8:40 - 8:17pm
August .....	8:16 - 7:28pm
September .....	7:26 - 6:31pm
October .....	6:29 - 5:38pm
November .....	5:36 - 4:08pm
December .....	4:08 - 4:16pm

# EPHRAIM WALK PATH

## NOTES



The entire green loop measures 3 miles.



Shoreline walk (dashed green line) measures 1.5 miles

\* Sidewalk on east side of Hwy. 42/Water Street from Brookside Lane to Ephraim Fire Museum



Jetty



\* Rough path from Moravia to Willow St. (An alternate route is through the Moravian Church parking lot.)

## KEY TO MAP NUMBERS

- 1 Wetlands Preserve
- 2 Iverson House Museum (1853)
- 3 Moravian Cemetery
- 4 Moravian Church
- 5 Lutheran Church
- 6 Pioneer Schoolhouse Museum (1880) & Goodletson Cabin (1850s)
- 7 Ephraim Historical Foundation Offices & Anderson Barn History Center
- 8 Anderson Dock & Anderson Store Muesum (1858)
- 9 Ephraim Visitor Information Center
- 10 Village Hall & Ephraim Library



# PENINSULA STATE PARK

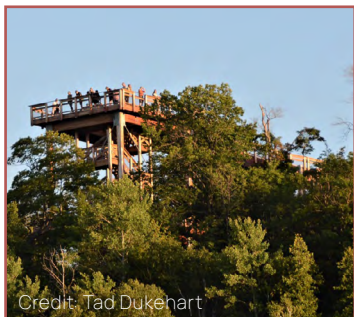


Credit: DDC/John Nienhuis

Established in 1909, Peninsula State Park is a 3,776-acre state treasure located on Ephraim's southern boundary. In the summer the park offers hiking, biking, golfing, camping, geocaching or boating. Relax at Nicolet Beach or take in a show at their outdoor amphitheater, home to Northern Sky Theater's summer season. In the winter, enjoy cross-country skiing, snowshoeing, sledding, snowmobiling, snow camping or ice fishing. Views of Ephraim from across Eagle Harbor await you from Peninsula State Park Golf Course, Restaurant & Driving Range. Established in 1921, the 18-hole course cuts through the park's wooded slopes and limestone cliffs. The park is also home to the 6-Hole Short Course & Golf Education Center!

## Eagle Tower

See Ephraim, surrounding islands, and panoramic views of Peninsula State Park from high above the stunning Niagara Escarpment. Climb the 100 steps or take the 850 foot, fully-accessible canopy walk to the top of the viewing platform. Open seasonally from May 1 - October 31.



Credit: Tad Dukehart



Credit: DDC/Mike Tittel

## Eagle Bluff Lighthouse

Eagle Bluff Lighthouse was established in 1868 and automated in 1926. It's one of 10 in Door County. Restoration for the lighthouse began in 1960 by the Door County Historical Society. The lighthouse is open for tours from late-May through mid-Oct.

# HISTORICAL SITES



NUMBERS ON THIS MAP REFERENCE  
HISTORICAL SITES ONLY.

- |   |  |
|---|--|
| 1. Anderson Dock and Warehouse (1858)                 | 19. Historical Marker  |
| 2. Ice House (late 1800s)                             | 20. Oscar Wilson's Confectionery and Ice Cream Parlor (1906) |
| 3. Anderson Gas Station (ca.1915)                     | 21. Hillside Hotel (1890)                                    |
| 4. Anderson Store Museum (ca. 1858)                   | 22. Monument   |
| 5. Anderson Barn Museum (ca. 1870)                    | 23. Old Ephraim Fire Station (ca. 1934)                      |
| 6. Aslag Anderson Family Home (1870-1884)             | 24. Pioneer School (1880)                                    |
| 7. Irwin Family Home (1912)                           | 25. Lutheran Church (1882)                                   |
| 8. Visitor Information Center (ca. 1930)              | 26. Anderson Hotel (ca. 1900)                                |
| 9. Peter Peterson/James Hansen's General Store (1874) | 27. Moravian Church (1859)                                   |
| 10. Edgewater Condominiums (1890s)                    | 28. Historic Iverson House (1853)                            |
| 11. Residence (ca. 1900)                              | 29. Pease Cottage (1902)                                     |
| 12. Lutheran Parsonage (1874)                         | 30. Evergreen Beach Hotel (late 1800s)                       |
| 13. Original Post Office Building (1862)              | 31. Moravian Cemetery (1853)                                 |
| 14. Abraham Oneson Home (late 1800s)                  | 32. Hans Nelson Farmhouse (1890)                             |
| 15. Andrew Oneson Home (1918)                         | 33. Jacob Smith Home (1890s)                                 |
| 16. Sohns' Meat Market (1905)                         |  |
| 17. Old Creamery Building (1900)                      |  |
| 18. Ephraim Village Hall (ca. 1926)                   |  |

Credit: Ephraim Historical Foundation

For more information on historical sites and tours please contact the Ephraim Historical Foundation:  
920-854-9688 • [info@ephraim.org](mailto:info@ephraim.org)





## ACCOMMODATIONS

## ACTIVITIES & ATTRACTIONS

## PERFORMING ARTS

## SHOPS

## GALLERIES

## RESTAURANTS

## SERVICES

### P PARKING

### Public Restroom

### Post Office

### L PUBLIC LIBRARY

### † CHURCH

### ▲ COUNTY/STATE PARK

### Boat Launch

### GOLF COURSE

### Beach

### T TENNIS COURTS

### AIRPORT

### CHERRY STREET STEPS

## Eagle Harbor

MAP NOT DRAWN TO SCALE  
(not a complete residential map)



1. Door County Trolley
2. Peninsula Players Theatre
3. Edge of Park Bike Rentals
4. Door Community Auditorium
5. Segway the Door Tours
6. Skyway Drive-In Theatre
7. Northern Sky Theater
8. Balistreri Fine Art
9. Peninsula State Park Golf Course & Restaurant
10. Peninsula State Park Short Course

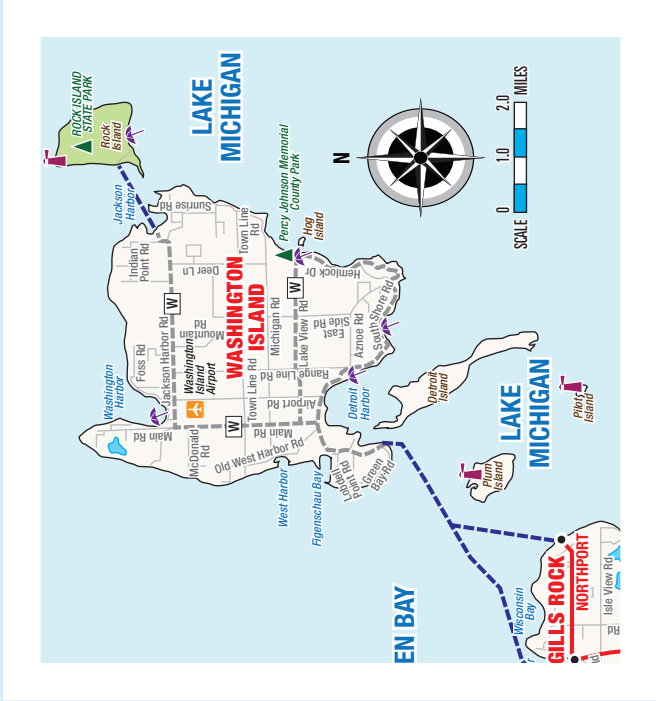
11. Peninsula State Park Driving Range
12. Good Eggs
13. Bay Breeze Resort
14. Alfron Jensen Cottages
15. Ephraim Village Cottages
16. Zabler Design Jewelers
17. Eagle Harbor Inn
18. Aunt Velma's House N Heart
19. The Ephraim House
20. Collings Cottages LLC
21. Beach People Ephraim

22. The Great Outdoors
23. Water Street Inn
24. Arbor Crown Properties & Hillside Waterfront Hotel
25. Ephraim Moravian Church
26. Hobby Horse Cottage
27. Pioneer Acres Cottages
28. Cultured
29. Aqualand Campground
30. Wilson's Restaurant & Ice Cream Parlor
31. Bella Sailing Cruises & South Shore Pier Boat Rental

32. Winter Visitor Information Center
33. Mayberry's Carriage & Sleigh Rides
34. Chef's Hat Café
35. Trixie's
36. Lodgings at Pioneer Lane
37. Pearl Wine Cottage
38. Arbor Cottage
39. Ephraim Shores Resort & Sunset Harbor Grill
40. Village Green Lodge
41. Edgewater Resort
42. Old Post Office Restaurant
43. Summer Visitor Information Center
44. Ephraim Yacht Club
45. Pine Grove Resort

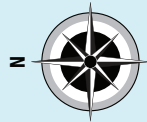
46. Anderson House Shop & Gallery
47. Ephraim Historical Foundation
48. Hardy Gallery
49. Vintique Resale
50. Waterbury Inn
51. Sip
52. Artzy Studio
53. The Lodge 106.9
54. Unitarian Universalist Fellowship of Door County
55. The House at Green Cables
56. Fine Line Designs Gallery
57. High Point Inn
58. Somerset Inn & Suites
59. Ephraim Motel
60. Red Putter Mini Golf

61. Door County Rock & Gem
62. Midsömmar Apothecary & Luminarium
63. Island Lavender Company
64. Summer Kitchen Restaurant
65. Peninsula Music Festival Office
66. Sister Bay Scenic Boat Tours
67. Door Guide Publishing
68. Thomas M. Schuder, S.C.
69. David Insurance, A Vitalize Company
70. Innovative Printing
71. Nicolet National Bank
72. Door County Piggy Wiggly
73. Door County Medical Center



- County/State Park
- Beach
- Lighthouse
- Airport
- State Highway
- County Highway
- Ferry Route

Map by Boettcher Communications, LLC



SCALE 0 1.0 2.0 MILES

GREEN BAY



LAKE MICHIGAN



GREEN BAY

GREEN BAY

LAKE MICHIGAN

# COMMUNITY RESOURCES

## BETHANY LUTHERAN CHURCH

Hwy. Q & Moravia Street  
Parsonage, (920) 854-4065

## EPHRAIM MORAVIAN CHURCH

Moravia Street • (920) 854-2804

## UNITARIAN UNIVERSALIST FELLOWSHIP OF DOOR COUNTY

10341 Water Street (Hwy. 42)  
North Ephraim • (920) 854-7559

## EPHRAIM LIBRARY

9996 Water Street (Hwy. 42)  
Historic Village Hall  
(920) 854-2014

## FIREHOUSE MARINA

9970 Water Street (Hwy. 42)  
(920) 854-6861

## U.S. POST OFFICE

Cedar Street  
(920) 854-4426

## VILLAGE OF EPHRAIM ADMINISTRATIVE OFFICE

Hwy. Q & Norway Street  
(920) 854-5501

## EPHRAIM-GIBRALTAR AIRPORT

9667 Maple Grove Road  
(920) 854-9711

## VISITOR CENTER

(920) 854-4989, Year-round  
Vacation@Ephraim-DoorCounty.com



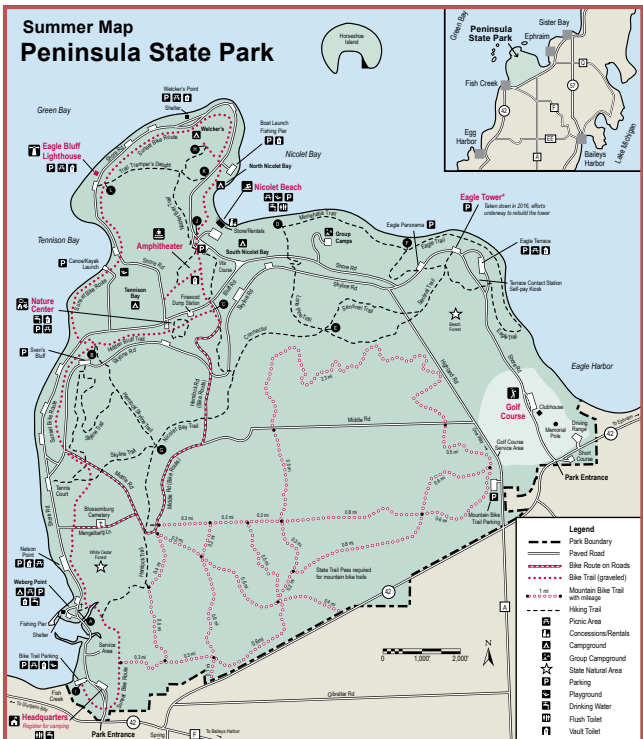
## SUMMER LOCATION

10049 Water Street (Hwy. 42)  
May-October



## WINTER LOCATION

9996 Water Street (Hwy. 42)  
By Appointment





## ACCOMMODATIONS

### ALFON JENSEN COTTAGES

9846-9848 Water Street (Hwy. 42)

P.O. Box 46, Ephraim.....651-491-9574 or 920-854-2655

Beside the use of a private beach on Eagle Harbor, our cottages provide TV, DVD, WiFi, full kitchen, screened front porch and outside grill. We also allow dogs! The cottages are within walking distance of the Peninsula Park golf course to the south and north to the public library, Wilson's, the post office, Ephraim's Historical Museum and other interesting, fun and "must see" spots. mdhickey@hotmail.com (See map #14)

### AQUALAND CAMPGROUND

2445 Hwy. Q, East of Ephraim.....920-854-4573

With 150 campsites on 67 acres, our family-run campground is an ideal place to unwind and experience Door County. You'll love our heated pool, paths and trout ponds. Located minutes from beaches, shopping, restaurants, and Peninsula State Park.

www.aqualandcampground.com (See map #29)

### ARBOR COTTAGE \*

10006 Water Street (Hwy. 42).....319-541-0835

Arbor Cottage is nestled in the heart of the Village of Ephraim on the shores of Eagle Harbor. This historic Post Office building (circa 1850's) has been lovingly restored to a charming shorefront cottage. Savor the beauty of unforgettable sunsets, island & bluff vistas from your private waterfront area. Walk to all that is quintessential Door County.

www.vrbo.com/307617; info@arbor-cottage.com (See map #38)

### BAY BREEZE RESORT

9844 Water Street (Hwy. 42).....920-854-9066

Enjoy waterfront access or indulge in a rain shower with multiple body sprays! Outdoor heated pool and whirlpool. Two-room suites or deluxe single units. Choose from in-room amenities like a whirlpool, gas fireplace or views of Eagle Harbor. Electric vehicle charging stations, expanded parking and a storage shed for bikes and kayaks. Located near Peninsula State Park. Free Wi-Fi.

www.BayBreezeResort.com; Innkeeper@BayBreezeResort.com

(See map #13)

### COLLINGS COTTAGES LLC

9916 Water Street (Hwy. 42).....888-980-1355

Collings Cottages are located in the heart of historic Ephraim! Minutes away from everything that Ephraim has to offer: shopping, restaurants, and the public beach. Our cozy log cabin sleeps 6 with all the amenities of home. The Summer House sleeps 4. We are open May 1 through November 15th.

thesimplelifehospitality.com;

contactus@thesimplelifehospitality.com (See map #20)

### EAGLE HARBOR INN \*

9914 Water Street (Hwy. 42).....920-854-2121

Across from the bay in the Historic District, one block to Ephraim Beach! Our Inn rooms and 1 & 2 bedroom whirlpool suites with fully equipped apartment size kitchen offers couples and families a main street location to call home. Indoor pool, sauna, fitness center, playground, electric vehicle charging stations, lawn games, Honeymoon & Elopement pkgs., and Afternoon Treats. Open year-round and Travel Green certified.

www.EagleHarborInn.com; welcome@eagleharbor.com (See map #17)

### EDGEWATER RESORT \*

10040 Water Street (Hwy. 42).....920-854-2734

Edgewater Resort stands out on the shoreline due to its classic architecture and amazing views of the bay. Most rooms are large one-bedroom condos featuring a king bedroom with whirlpool tub, full kitchen, living room with fireplace, and water view veranda. Proudly featuring the best sunset in Door County! Pet friendly cottages also available. Visit us year round!

www.edge-waterresort.com; stay@edge-waterresort.com (See map #41)





## THE EPHRAIM HOUSE ✱

9870 Hoganson Lane.....608-628-8199

Enjoy casual elegance at The Ephraim House, a fully-furnished vacation home located in the heart of historic Ephraim, just steps from the waterfront. This house boasts 5 bedrooms and can accommodate up to 14 guests, along with a hot tub, outdoor fire pit, and professional-grade kitchen. You can also take advantage of the exciting amenities such as our kayak, paddleboards, bicycles, and high-speed internet (400 Mbps). Let us help you create an unforgettable Door County vacation experience!

[www.theephraimhousedc.com](http://www.theephraimhousedc.com); [theephraimhouse@gmail.com](mailto:theephraimhouse@gmail.com)  
(See map #19)

## EPHRAIM MOTEL

10407 Water Street (Hwy. 42).....920-854-5959

Nestled in the woods of North Ephraim our comfortable rooms feature Wi-Fi, refrigerator, microwave and in-room coffee. Enjoy daily "hot" breakfast featuring homemade egg-bakes or French toast. Relax in the outdoor heated pool or one of several garden seating areas. Grills available for picnicking. Beer and wine available. Sorry, no pets. Centrally located to all of Door County's many attractions.

[www.ephraimmotel.com](http://www.ephraimmotel.com); [frontdesk@ephraimmotel.com](mailto:frontdesk@ephraimmotel.com) (See map #59)

## EPHRAIM SHORES RESORT

10018 Water Street (Hwy. 42).....920-854-2371 or 877-854-2371

Relaxed lodging with a water view, in the heart of Ephraim. Sundeck, beach, playground, bikes, indoor pool and whirlpool, exercise and game rooms, A/C, cable TV, Wi-Fi, microwaves, refrigerators, coffee pots, in-room spas, kitchens. Boat rental, shops, golf and tennis nearby. Smoke free property. Sorry, no pets.

[www.EphraimShores.com](http://www.EphraimShores.com); [reservations@ephraimshores.com](mailto:reservations@ephraimshores.com)  
(See map #39)

## EPHRAIM VILLAGE COTTAGES

3082 Larson Lane.....920-559-2565

Ephraim Village Cottages help families make Door County vacation memories that last a lifetime. Dog Friendly! We are a family-owned property with 12 newly decorated cottages situated on three acres in the heart of Ephraim across from the public beach and a short walk to the Village center. Each 1-3 bedroom cottage has all the interior comforts of home including a fireplace (in most) and exterior niceties including a charcoal grill, picnic table, deck chairs and a huge shared fire pit with comfortable seating. Our boosted Wi-fi ensures your family stays connected. We love to host large groups for reunions, ladies' weekends, men's golf outings and birthdays. Children will delight in playing on a brand-new playground set. Adults will enjoy outdoor games such as bags, bocce, badminton and hammocks. Starry nights and refreshing mornings filled with bird songs await you and your family as you experience an authentic Door County vacation at Ephraim Village Cottages.

[www.ephraimvillagecottages.com](http://www.ephraimvillagecottages.com); [cottages@ephraimvillagecottages.com](mailto:cottages@ephraimvillagecottages.com);  
@ephraimvillagecottages on Facebook, Instagram and TikTok (See map #15)

## HIGH POINT INN ✱

10386 Water Street (Hwy. 42).....920-854-9773 or 800-595-6894

Relax in a 1, 2, or 3 bedroom non-smoking suite complete with fireplace, in-room whirlpool bath, full kitchen and living/dining area. Resort amenities include free Wi-Fi, indoor pool and whirlpool, outdoor pool, exercise and game rooms, BBQ grills and children's playground. Walk to shops, restaurants and day spa. Open year-round. Seasonal rates and packages.

[www.highpointinn.com](http://www.highpointinn.com); [info@highpointinn.com](mailto:info@highpointinn.com) (See map #57)



### HILLSIDE WATERFRONT HOTEL \*

9980 Water Street (Hwy. 42).....920-854-7666

Enjoy the hospitality of our historic bed and breakfast along with the perfect balance of elegance and wellness at Hillside Waterfront Hotel. Relax and be sure to take advantage of our concierge services and luxurious amenities during your stay. We have five beautiful rooms that include spa-quality accommodations and balconies with gorgeous views. The inn and our two family-friendly private cottages are just steps from the sandy beaches and stunning sunsets of Eagle Harbor – not to mention walkable Ephraim and its delicious dining scene. Hillside is open year round for guests to enjoy all that Door County has to offer.

[www.hillsideofdoorcounty.com](http://www.hillsideofdoorcounty.com);

[concierge@hillsideofdoorcounty.com](mailto:concierge@hillsideofdoorcounty.com) (See map #24)

### HOBBY HORSE COTTAGE

9970 South Dane Street.....727-420-4246

This spacious two story home has 4 bedrooms, 2 baths and sleeps 8. It features a large kitchen and roomy dining and living areas. Located on 1.5 acres overlooking the water. Cable and WiFi. Rents Sat to Sat, May 27 through October 8. \$1,995/week.

[www.vrbo.com/823896](http://www.vrbo.com/823896); [hobbyhorsescottage@gmail.com](mailto:hobbyhorsescottage@gmail.com)

(See map #26)

### THE HOUSE AT GREEN GABLES \*

10355 Bella Vista Lane .....646-210-7171

Peaceful Green Gables offers four unique accommodations in a remarkable garden setting, catering to different tastes and requirements. SPRUCE RETREAT is a richly-decorated log home, ideal for a romantic stay, The spacious PLUM and APPLE can be enjoyed by a couple or a family. BIRCH is an elegant hideaway with over 300 books.

[www.greengablesdoorcounty.com](http://www.greengablesdoorcounty.com);

[greengablesdoorcounty@gmail.com](mailto:greengablesdoorcounty@gmail.com) (See map #55)

### LODGINGS AT PIONEER LANE

9998 Pioneer Lane.....920-854-7656

Centrally located in Ephraim, the family-owned and operated Lodgings at Pioneer Lane, is ready to welcome you! Each of the seven individually decorated rooms are adorned with a king bed with fine linens, a spacious shower, a refrigerator and microwave, and a personal outdoor seating area. Book your stay today!

[www.lodgingsatpioneerlane.com](http://www.lodgingsatpioneerlane.com);

[lodgingsatpioneerlane@gmail.com](mailto:lodgingsatpioneerlane@gmail.com) (See map #36)

### PINE GROVE RESORT

10080 Water Street (Hwy. 42).....920-854-2321

Located in the heart of Ephraim, Pine Grove's waterfront resort and private shoreline with a 40 foot pier offers the best sunset viewing in Door County. As you watch the sailboats glide across the blue waters, the refreshing breeze will whisper into your room. Watch the breathtaking sunsets, pamper yourself, and escape from the harried world you left behind.

[www.pinegrovedoorcounty.com](http://www.pinegrovedoorcounty.com); [info@pinegrovedoorcounty.com](mailto:info@pinegrovedoorcounty.com)

(See map #45)

### PIONEER ACRES COTTAGES

2965 Hwy. Q.....920-854-2425 or 877-411-2425

Quiet, wooded setting 3 blocks from the water with 1, 2 or 3 bedroom cottages, some log, each with fireplace, kitchen and cable TV. Grills, picnic tables and firewood provided. Free internet. Tennis courts and playground adjacent. Open May-October.

[www.PioneerAcresCottages.com](http://www.PioneerAcresCottages.com); [kwilson54211@gmail.com](mailto:kwilson54211@gmail.com)

(See map #27)



## SOMERSET INN & SUITES

10401 Water Street (Hwy. 42) .....920-854-1819 or 800-809-1819

Where warm hospitality welcomes you at the DOOR! Located in an idyllic location in the north woods of Ephraim and within walking distance to shops, attractions and restaurants. Spacious hotel rooms, fireplace and whirlpool suites all with microwave, refrigerator, and private balcony or patio. Indoor pool and hot tub, heated outdoor pool, gas firepit patio, grilling station with picnic areas, free Wi-Fi, & gathering rooms.

[www.somersetinnndc.com](http://www.somersetinnndc.com); [somersetinnndoorcounty@gmail.com](mailto:somersetinnndoorcounty@gmail.com)

(See map #58)

## VILLAGE GREEN LODGE

10013 Poplar Street

Off Cedar Street.....920-854-2515

Relax. Renew. Retreat. Walk to all things Ephraim! Enjoy the adults-only atmosphere a half block away from Eagle Harbor. Catch a beautiful sunset or relax by the heated outdoor pool. We are known for clean and comfortable rooms and suites!

[www.villagegreenlodge.com](http://www.villagegreenlodge.com); [relax@villagegreenlodge.com](mailto:relax@villagegreenlodge.com)

(See map #40)

## WATERBURY INN ❄

10321 Water Street (Hwy. 42) .....920-854-2821

The Waterbury Inn is open every day of the year! Centrally located just minutes from everything Door County, let us be your Home Away from Home as you explore Door County all year long. Winter lodging specials, indoor and outdoor pools, free Wi-Fi, fully stocked kitchens in every unit, and a friendly staff to help you explore fabulous Door County!

[www.WaterburyInn.com](http://www.WaterburyInn.com); [waterburyinn.dcwis@gmail.com](mailto:waterburyinn.dcwis@gmail.com)

(See map #50)

## WATER STREET INN

9944 Water Street (Hwy. 42) .....920-854-2831

Nestled within Eagle Harbor, The Water Street Inn has been "home away from home" for generations of guests. In recent years, the property has been meticulously restored to provide modern amenities while maintaining the inn's historic charm. From unparalleled water views in every room to croquet on the lawn, The Water Street Inn is simply the perfect place to unwind.

[www.waterstreetinnephraim.com](http://www.waterstreetinnephraim.com);

[info@waterstreetinnephraim.com](mailto:info@waterstreetinnephraim.com) (See map #23)

Credit: The Ephraim House





## ACTIVITIES & ATTRACTIONS

### BELLA SAILING CRUISES

South Shore Pier.....920-854-2628 or 920-421-0657

We offer a unique sailing experience on a beautiful 26 foot antique sailboat. You'll enjoy seeing charming Ephraim, islands and Peninsula State Park. All trips are 2 hours, affordably priced, maximum 6 passengers. Beverages and food allowed.

(See map #31)

### DOOR COUNTY TROLLEY ❄

8030 Hwy. 42, Egg Harbor .....920-868-1100

15 unique Trolley tours to choose from: Scenic tours, Wine tours, Ghost tours, Lighthouse tours and so many more! Join us on a tour and truly experience all that Door County has to offer. We are also available for private rentals including weddings and family reunions! We have a 2,500 sq ft retail section filled with clothes, mugs stickers and other unique gifts. Make it a point to stop by the Trolley Station and see why we're your 'go to' souvenir destination! [www.doorcountytrolley.com](http://www.doorcountytrolley.com); [doorcountytrolley@gmail.com](mailto:doorcountytrolley@gmail.com)

(See map #1)

### EDGE OF PARK RENTALS

4025 Evergreen Road, Fish Creek.....920-868-3344

Located steps from Peninsula State Park trailheads, family owned Edge of Park offers a wide range of bicycle and moped rentals for all ages and abilities. Enjoy popular Sunset Bike Trail or scenic paved roads throughout the Park and surrounding County. Our experienced staff will ensure you find the best routes for you and your family. Rentals include a helmet, lock, map and backpack as well as easy parking and trail access to get you on your adventure in no time!

[www.edgeofpark.com](http://www.edgeofpark.com); [edgeofpark@gmail.com](mailto:edgeofpark@gmail.com) (See map #3)

### EPHRAIM HISTORICAL FOUNDATION

3060 Anderson Lane.....920-854-9688

Visit Ephraim's historic sites, view exhibitions, and participate in special programs for free at the Ephraim Historical Foundation! Explore the village's unique history from the comfort of an open-air tram on guided tours or explore at your own pace. The Ephraim Historical Foundation also houses a robust archival collection that is available for researchers by appointment throughout the year. For hours, tour prices, and more visit [www.ephraim.org](http://www.ephraim.org).

(See map #47)

Credit: The Red Putter







## EPHRAIM YACHT CLUB

10071 Water Street (Hwy. 42).....Summer Only, 920-854-7107

Learn to sail! The EYC is Door County's family-oriented community sailing center, open June through Labor Day. We offer sailing lessons for children and adults, have several fleets of small one-design sailboats available for member use, and promote amateur sailing competition in Ephraim's beautiful Eagle Harbor. Membership is affordable and open to all.

[www.eyc.org](http://www.eyc.org); [admin@eyc.com](mailto:admin@eyc.com) (See map #44)

## MAYBERRY'S CARRIAGE & SLEIGH RIDES ✱

Historic Ephraim Village Hall

9996 Water Street (Hwy. 42).....920-421-1152

See one of the county's most picturesque villages by horse-drawn carriage. Sit back and relax as you view the shoreline, or get lost on the back streets of Ephraim for a quieter time. Open 6-10pm or later, mid-May through October. Reservations are a good idea, walk-ups always welcome. Winter sleigh rides at Orchard Country Winery, half mile south of Fish Creek on Hwy. 42. Open Saturday and Sunday 11am-3pm, some weekdays. Call for reservations.

[www.MayberrysCarriages.com](http://www.MayberrysCarriages.com); [John@MayberrysCarriages.com](mailto:John@MayberrysCarriages.com)

(See map #33)

## PENINSULA STATE PARK GOLF COURSE & RESTAURANT

9890 Shore Road.....920-854-5791

18-hole classic woodland golf course set in beautiful Peninsula State Park, with majestic views of Eagle Harbor and Ephraim. Great course conditions, driving range, Pro Shop, and the popular Clubhouse Restaurant serving breakfast from Memorial Day through Labor Day. Breakfast available on weekends only from 7am-10:30am. Lunch served daily May through mid-October 10:30am - 2pm. Now offering beer and wine at the clubhouse. No park sticker required. Tee times and twilight rates available daily.

[www.PeninsulaGolf.org](http://www.PeninsulaGolf.org); [info@peninsulagolf.org](mailto:info@peninsulagolf.org) (See map #9)

## PENINSULA STATE PARK SHORT COURSE & DRIVING RANGE

Short Course: 3296 Holand Road.....920-421-1332

Driving Range: 9795 Water Street (Hwy. 42).....920-854-2352

Peninsula State Park Golf Course now has a 6-hole par three short course open for play. The course along with a full service driving range provide golfers of all abilities a place to practice and play the game in a non-intimidating environment. All fees are \$10 or less. Clubs are available for rent. Professional instruction is available.

[www.PeninsulaGolf.org](http://www.PeninsulaGolf.org); [info@peninsulagolf.org](mailto:info@peninsulagolf.org) (See map #10/#11)

## RED PUTTER MINI GOLF

10404 Water Street (Hwy. 42), North Ephraim.....920-615-4787

Affordable Family Fun!! Traditional 18-Hole miniature golf course with many challenging obstacles. It's "Where the Pros Play!" Practice your skills and join us for the Red Putter Pro Tournament, held the first Saturday in August. After your game, relax at our picnic area and Bobby's Playground. Open daily, 10am - 10pm May through October.

[redputterminigolf@gmail.com](mailto:redputterminigolf@gmail.com) (See map #60)

## SEGWAY THE DOOR TOURS ✱

3903 Hwy. 42, Fish Creek.....920-376-0256

A Segway is a unique and extremely fun way to see the beautiful scenery of Door County. On your guided tour of Peninsula State Park you will glide up and down hills and see amazing views. Guided Segway tours daily through Washington Island, Ellison Bay, Sister Bay, Baileys Harbor, Egg Harbor, Cave Point, and Sturgeon Bay. New- Scooter Tours!

[www.GlideNEW.com](http://www.GlideNEW.com); [GlideNEW@gmail.com](mailto:GlideNEW@gmail.com) (See map #5)



## ACTIVITIES & ATTRACTIONS

### SISTER BAY SCENIC BOAT TOURS

10707 N. Bay Shore Drive, Sister Bay.....920-421-4444

Get out on the water TODAY! Choose a narrated cruise to see Peninsula State Park and the islands around or a cruise north to Death's Door. The narration is informative and entertaining! There is also a live music sunset cruise that you can enjoy. Tours available Monday-Saturday. You haven't seen Door County until you have seen it from the water!

[www.doorcountyboats.com/sister-bay-scenic-boat-tours/](http://www.doorcountyboats.com/sister-bay-scenic-boat-tours/);  
[tours@doorcountyboats.com](mailto:tours@doorcountyboats.com) (See map #66)

### SKYWAY DRIVE-IN THEATRE

3475 Hwy. 42

Between Ephraim & Fish Creek.....920-854-9938

Named America's #1 drive-in by TripAdvisor! Enjoy Hollywood's latest movies in a nostalgic, wooded setting. Door County's entertainment bargain since 1950. Double features. First movie begins at dusk. Radio sound. Snack Bar featuring foot-long hot dogs, pizza, nachos, soft pretzels, ice cream and fresh popcorn with real butter. Open weekends in May, September and October; nightly June through Labor Day.

[www.DoorCountyDriveIn.com](http://www.DoorCountyDriveIn.com); [skywaydriveintheatre@yahoo.com](mailto:skywaydriveintheatre@yahoo.com)  
(See map #6)

### SOUTH SHORE PIER BOAT RENTAL

9993 Water Street (Hwy. 42).....920-854-4324

Rent a family-size pontoon boat and view the beautiful Door County shoreline. Go jet skiing on a Waverunner. Explore Eagle Harbor on a paddleboat. Located in the heart of Ephraim, across from Wilson's Restaurant & Ice Cream Parlor. Call for reservations Memorial Day weekend through Labor Day.

[www.SouthShorePier.com](http://www.SouthShorePier.com) (See map #31)

Credit: Tad Dukehart





## DOOR COMMUNITY AUDITORIUM ✱

3926 Hwy. 42.....920-868-2728

Door Community Auditorium (DCA) is Door County's year-round, indoor venue for the arts, entertainment, cultural opportunities, exhibits, and community events. DCA hosts a diverse mix of professionals, community groups, regional talent, and student artists. In recent years, our stage has been graced by the likes of Lyle Lovett, Buddy Guy, The Beach Boys, The Lumineers, Melissa Etheridge, Ira Glass, Ziggy Marley, Charlie Daniels, Joan Baez, and Mavis Staples. DCA is supported by visitors and residents through ticket sales, charitable giving, and volunteerism.

[www.dcauditorium.org](http://www.dcauditorium.org); [boxoffice@dcauditorium.org](mailto:boxoffice@dcauditorium.org) (See map #4)

## NORTHERN SKY THEATER ✱

Outdoor Park Amphitheater: 10169 Shore Road, Fish Creek

Ticket Office & Indoor Gould Theater

9058 County Road A, Fish Creek.....920-854-6117

Northern Sky is a must-see Door County theater experience: original musicals presented beneath stars and towering pines in Peninsula Park Amphitheater, as well as indoors at the intimate, state-of-the-art Gould Theater. No matter the venue, Northern Sky is "as much a Door County tradition as cherry preserves...one of the most exceptional professional troupes in the country" (Chicago Tribune).

[www.northernskytheater.com](http://www.northernskytheater.com); [info@northernskytheater.com](mailto:info@northernskytheater.com)

(See map #7)

## PENINSULA MUSIC FESTIVAL ✱

10431 N. Water Street (Hwy. 42)

P.O. Box 340, Ephraim.....920-854-4060

Join us for our 72nd season, August 1-19. We welcome our new world renowned conductor, Rune Bergmann, from Norway! Experience a dynamite orchestra with professional musicians, all influential in their own fields, as they bring us prestigious music from all over the globe. All concerts are performed in the Door Community Auditorium located in Fish Creek. Tickets \$30 - \$75; Students/Children \$10.

[www.musicfestival.com](http://www.musicfestival.com); [musicfestival@musicfestival.com](mailto:musicfestival@musicfestival.com)

(See map #65)

## PENINSULA PLAYERS THEATRE

4351 Peninsula Players Road, Fish Creek.....920-868-3287

Door County's professional theatrical treasure, presenting Broadway-quality comedies, dramas and musicals for 88 seasons. Delight in the entire Peninsula Players Theatre experience – remarkable artistic talent, tranquil shoreline Beer Garden and warming intermission bonfire. Discover why visitors and locals alike make this renowned artistic company, located in a picturesque setting, a must-do. June 13 through October 15, 2023.

[www.peninsulaplayers.com](http://www.peninsulaplayers.com); [tickets@peninsulaplayers.com](mailto:tickets@peninsulaplayers.com)

(See map #2)

Credit: Peninsula Music Festival





## SHOPS

### ANDERSON HOUSE SHOP & GALLERY

3065 Anderson Lane.....920-854-4142

A Door County destination for 53 years! Experience the warmth and charm of historic Anderson House while discovering unique goods. Specializing in American artisans and fair trade merchandise from around the world. Jewelry, gifts, home and garden decor. Across from Anderson Dock. Open 11am - 4pm Tuesday - Saturday and closed Sunday and Monday.  
andersonhousesg@gmail.com (See map #46)

### AUNT VELMA'S HOUSE'N HEART

9922 Water Street (Hwy. 42)

Shorewood Village Shops.....920-854-2483

This shop is a must see when you are in Door County. We offer items for you and your home and garden. Ephraim and Door County t-shirts, sweatshirts and caps. Lodge, lighthouse, handmade items, souvenirs, gifts, and more. Open May through October.  
(See map #18)

### BEACH PEOPLE EPHRAIM

9930 Water Street (Hwy. 42).....920-854-7757

A fun family gift shop for all ages. Featuring custom Door County apparel, gifts, toys, housewares, summertime jewelry. Fun outdoor toys and stuffed animals featured in the kids' room, filled with items to make the vacation even more fun than it already is.  
www.BeachPeopleDC.com (See map #21)

### DOOR COUNTY PIGGLY WIGGLY \*

10576 Country Walk Drive, Sister Bay.....920-854-2391

Nearly 23,000 square feet of produce, bakery, deli, dairy, frozen foods, meat, liquor, wine and beer sections! Featuring full deli & catering, certified angus beef, fresh & local produce, in-store bakery and custom cakes. Full liquor, wine & beer sections. Talk to us about catering your next occasion! Open 7:00 am-8:00 pm daily, call for winter hours.  
www.ShopthePig.com; pigglywigglysb@gmail.com (See map #72)

### DOOR COUNTY ROCK & GEM

Hwy. 42 North Ephraim.....920-854-3667

Come and experience Door County's most unique shop. Crystals, Minerals, Jewelry, Décor, Fossils and Fun. Shoppers, rock hounds, scientists, healers and kids of all ages will find breathtaking selections. Now with 2 stores; Fish Creek and North Ephraim. Bring the family to our sluice box mining fun in North Ephraim.  
www.doorcountyrocksandgem.com; scott@doorcountyrocksandgem.com  
(See map #61)

### THE GREAT OUTDOORS

9932 Water Street (Hwy. 42).....920-854-5215

Whether you're here for the water, beach or the woods, The Great Outdoors has you covered. The best original custom designs in Door County for apparel, gifts, artwork, and home decor. Inspired items and artwork for love of nature and our beautiful state and local outdoor places. Stop in, you will love it! Shopping made fun for the entire family!  
(See map #22)

### ISLAND LAVENDER COMPANY \*

10432 N. Water Street (Hwy. 42).....920-737-1531

Experience the midwest's largest lavender market featuring home, beauty, bath, pet and artisan food products. Sample lavender soaps and lotions and taste handmade lavender chocolates, jams and ice cream made with locally grown lavender. Learn the art of lavender growing and essential oil distillation. Watch artist presentations making lavender products. Open daily 10-5, April - December and 10-4 Friday - Sunday, January - March. Experience all things lavender at our website marketplace with free shipping!  
www.islandlavender.com (See map #63)





## MIDSÖMMAR APOTHECARY & LUMINARIUM

10421 N. Water Street (Hwy. 42) ..... 920-559-9522

Midsömmar offers an array of traditional apothecary fare ~ tinctures, elixirs, oxmels, shrubs, herbal honeys and teas, including herbal home medicine chest basics. You'll also find curated tea-making and mixology tools, garden and foraging baskets, candles, wildcrafted herb bundles & incense, and other wellness must-haves. Join us in the Luminarium for workshops, plant sale & farm market pop-ups, art installations and special events.

[www.MidsommarHerbs.com](http://www.MidsommarHerbs.com); [Apothecary@MidsommarHerbs.com](mailto:Apothecary@MidsommarHerbs.com)

(See map #62)

## VINTIQUE RESALE ✱

10254 Water Street (Hwy. 42) ..... 920-854-8060

Vintique offers delightful in-style home decor and curated vintage finds. Enjoy our ever-changing inventory and seasonal palette, as the shop is constantly shifting. Pick out unique gifts and one-of-a-kind creations by local Door County artisans. Step through this iconic turret in Ephraim for a can't miss retail experience. We're conveniently located on Hwy 42!

[Vintiqueresale.com](http://Vintiqueresale.com); [bholm@vintiqueresale.com](mailto:bholm@vintiqueresale.com)

(See map #49)

## ZABLER DESIGN JEWELERS

9906 Water Street (Hwy. 42) ..... 920-854-4801

Framed by the waters of Eagle Harbor, the Arts and Crafts architecture of our seasonal store in Ephraim has the finest jewelry in Door County, Wisconsin. Specializing in engagement rings in pink, yellow and even green diamonds. Rare gems like Alexandrite, Tsavorite, Tanzanite, and Padparadscha Sapphire. Period 1920's white gold and platinum filigree. Genuine ancient Greek & Roman coins in original designs. Open Memorial Day through late October.

[www.zablerdesign.com](http://www.zablerdesign.com); [zablerdesign@gmail.com](mailto:zablerdesign@gmail.com)

(See map #16)

Credit: Door County Rock & Gem





### ARTZY STUDIO

10329 Water Street (Hwy. 42).....608-438-7633

Collectible Art, Antiques, and Shabby Chic in a beautiful butterfly garden setting. Featuring original jewelry, ceramics and paintings by Cynthia L. Koshalek. Owl Art by Clarence P. Cameron. Stained Glass by Norma Hove. Jewelry by Kerri Shannon. Garden Art & Sculpture, Blenko Glass, Home Decor, Scarves, Linens, and Paris Items. "A little bit of Paris in Door County". Open 10:00 a.m. to 4:00 p.m. Thursday through Monday.

Facebook: Artzy; clkartist@gmail.com; Instagram: clkartist2017  
(See map #52)

### BALISTRERI FINE ART

9727 Maple Grove Road.....414-534-8017

Welcome to Balistreri Fine Art located in the village of Ephraim. Paintings, drawings, sculpture, photography, prints, and gifts created by artist, John Balistreri. John works in a variety of styles, techniques, and mediums which guarantees a great selection of art that ensures there's something for everyone. Acquire high quality art to decorate your home or office at reasonable prices.

balistrerifineart@wi.rr.com; Balistrerifineart@gmail.com  
(See map #8)

Credit: The Hardy Gallery





### FINE LINE DESIGNS GALLERY & SCULPTURE GARDEN ❄

10376 Water Street (Hwy. 42).....920-854-4343

Fine Line Designs Gallery is housed in a renovated 1950s chicken coop and today operates in a beautiful multi-level space. The gallery features original paintings, glass, jewelry, clay, custom wood furnishings, sculpture and fiber rich in color and texture created by more than 90 acclaimed artists. Unique gifts and collectable artworks can be found indoors and out.

[www.FineLineDesignsGallery.com](http://www.FineLineDesignsGallery.com);

[finelinedesignsartgallery@gmail.com](mailto:finelinedesignsartgallery@gmail.com)

(See map #56)

### HARDY GALLERY

3083 Anderson Lane.....920-854-5535

Situated on the picturesque shoreline of Eagle Harbor, the non-profit Hardy Gallery provides truly unique experiences that enrich the cultural fabric of Door County. Take in an exhibit, learn about the artisans who live and work on the peninsula or simply enjoy a spectacular sunset. Visit us and you'll see why we are known as the premiere destination for learning about the visual arts and artists in Door County!

[www.TheHardy.org](http://www.TheHardy.org); [info@thehardy.org](mailto:info@thehardy.org)

(See map #48)

Credit: Fine Line Designs





## RESTAURANTS

### CHEF'S HAT CAFÉ \*

3063 Church Street (Hwy. Q).....920-854-2034

Whether looking for traditional homemade comfort foods or fresh unique new edge inviting foods, we have it all. Chef's Hat Café prides itself on quality fresh, locally sourced ingredients with that special twist. Outdoor seating on our patio. Serving breakfast, lunch and dinner, with spectacular views of Eagle Harbor and Peninsula State Park. Stop down and join us for fresh, homemade quality food with a view.

[www.ChefsHatDoorCounty.com](http://www.ChefsHatDoorCounty.com); [Tbkayak2@hotmail.com](mailto:Tbkayak2@hotmail.com) (See map #34)

### CULTURED \*

2570 County Q, Sister Bay.....215-589-3047

A sourdough bakery specializing in bagels, bread, and fermented goods like sauerkraut and kimchi. Storefront opening Spring of 2023 with drip coffee and bagel sandwiches. Outdoor seating available. Check out [culturedc.getminimart.com](https://culturedc.getminimart.com) or Instagram or Facebook @culturedsourdough for more information.

[cultured.dc@gmail.com](mailto:cultured.dc@gmail.com) (See map #28)

### GOOD EGGS

9820 Brookside Lane

Good Eggs specializes in breakfast burritos. Customers can wait in line to order in person and pay in cash or they can order with a simple App and pick up their food at a prescribed time. All food is wrapped to travel but a menagerie of cleverly conceived pick nick tables provide a garden like dining experience with a water view. Open; May to October, Seven to One, Seven days a week (less in spring and fall.)

(See map #12)



### OLD POST OFFICE RESTAURANT

10040 Water Street (Hwy. 42).....920-854-4034

Overlooking beautiful Eagle Harbor. Enjoy a Door County fish boil in our historic setting. Featuring fresh whitefish (chicken and ribs available), potatoes, onions, coleslaw, homemade breads and cherry pie. Fish boils are served Monday through Saturday, reservations requested. Homemade breakfasts served daily, featuring cherry and blueberry pancakes, fluffy omelets, Belgian waffles, homemade coffeecake and cherry muffins. Offering craft beer and select wine. Open May through October. Outdoor patio seating available.

[www.OldPostOffice-DoorCounty.com](http://www.OldPostOffice-DoorCounty.com) (See map #42)

### PEARL WINE COTTAGE

3058 Church Street.....920-633-5006

Pearl Wine Cottage is nestled in the heart of Ephraim in a cheerfully renovated, 100-plus-year-old building. Imbued with genuine warmth, this family-run wine bar is inviting and casual. From sparkling whites to full-bodied reds, enjoy a selection of wine from around the world. And sample a petite, seasonal food menu featuring both local and international delights. Cheers!

[PearlWinecottage.com](http://PearlWinecottage.com); [hello@pearlwinecottage.com](mailto:hello@pearlwinecottage.com) (See map #37)

Credit: Cultured







## SIP ❄

10326 N. Water Street (Hwy. 42).....920-857-5602

Sip offers bright, colorful, and fresh food, specialty coffees, daily specials, smoothies, and a rotating beer & wine list. Come in and Sip with us!  
coffee@sipdoorcounty.com (See map #51)

## SUMMER KITCHEN RESTAURANT

10425 Water Street (Hwy. 42).....920-854-2131

Door County's garden restaurant! The Summer Kitchen is open April through October, serving breakfast, lunch and dinner during peak season. Please try our famous soup bar, featuring five homemade soups with homemade bread. We also offer salads, sandwiches and homemade pies. Buses welcome. Featuring early bird specials for breakfast. Serving authentic Mexican dishes, homemade cherry sangria, wine & beer.  
Patio dining! Gluten free and vegetarian options available.  
Like us on Facebook.

www.TheSummerKitchenDoorCounty.com (See map #64)

## SUNSET HARBOR GRILL

10018 Water Street (Hwy. 42).....920-854-6565

Ephraim's newest dining experience has the best waterfront view in Door County! Watch the extravagant Eagle Harbor sunset while you dine! Offering homestyle breakfast, lunch, and dinner, including pancakes, omelets, sandwiches, burgers, salads, fresh fish, pasta, and steak. Located on the second floor of Ephraim Shores Resort in beautiful downtown Ephraim. Open May-October.  
(See map #39)

## TRIXIE'S

9996 Pioneer Lane.....920-854-8008

Trixie's is a small wine bar located just behind the historic Ephraim Town hall. Our focus is on providing beautiful food and wines in a casual, fun atmosphere. Our menu consists of dishes made from locally sourced, sustainably grown ingredients and our wine list is focused on low intervention, sustainable, organic, biodynamic, and female-made wines.  
www.trixiesfoodandwine.com (See map #35)

## WILSON'S RESTAURANT & ICE CREAM PARLOR

9990 Water Street (Hwy. 42).....920-854-2041

Wilson's Restaurant and Ice Cream Parlor has been located in the heart of Ephraim across from Eagle Harbor since 1906. A classic Door County landmark that possesses the enchantment to take the youngest visitors back in time with our old-fashioned soda fountain, ice cream specialties,

Credit: Sip





## SERVICES

### ARBOR CROWNE PROPERTIES \*

9980 Water Street (Hwy. 42).....920-854-3272

Whether it's finding your dream Door County home or listing your current property, Arbor Crowne Properties' dedication and experience will prove invaluable in this competitive market. They want to sell your home for the highest possible price, in the shortest amount of time, and with the most favorable terms. As a buyer, they will listen to your needs, get to know your wish list, and will help match you with the best house, cottage, or condo for you. Diane and her team specialize in waterfront and premier peninsula properties and will calmly and expertly guide you through your real estate search, purchase, or sale.

[www.arborcrowneproperties.com](http://www.arborcrowneproperties.com);

[diane@arborcrowneproperties.com](mailto:diane@arborcrowneproperties.com) (See map #24)

### DAVID INSURANCE, A VIZANCE COMPANY \*

10589 S. Highland Road.....920-854-2387

The Professional Center, Sister Bay

An independent insurance agency providing service for your business, home, auto, life and health. Open Mon – Thurs, 8:30 am – 5:00 pm, Friday, 8:30 am – 4:00 pm or by appointment.

[www.davidinsurance.com](http://www.davidinsurance.com); [dc@davidinsurance.com](mailto:dc@davidinsurance.com) (See map #69)

### DOOR COUNTY MEDICAL CENTER \*

2345 Canterbury Lane, Sister Bay.....920-854-3511

Primary care, behavioral health, diabetes education, OB/GYN, orthopedic services and podiatry services available. Other specialties include audiology and cardiology. Same day appointments will be available for patients requesting to see a primary care provider. In addition, The Regional Cancer Collaborative provides cancer care to patients at the Door County Cancer Center located on the hospital's main campus in Sturgeon Bay. Prevea After Hours is available 24/7 by calling 1-877-746-0003 to speak with a registered nurse. Visit us at [dcmedical.org](http://dcmedical.org) for more information.

[www.DCMedical.org](http://www.DCMedical.org) (See map #73)

### DOOR GUIDE PUBLISHING \*

Office: 2584 S. Bay Shore Drive, Suite A,

Sister Bay .....920-854-5555

Publisher of the *Door County Go! Guide*, a pocket-sized guidebook, and the *Door County Dining Guide*, featuring restaurant menus. Home of Door County Digital LLC, offering a full range of social media and digital marketing services, plus high-end video production. The Door County TODAY website ([doorcounty.net](http://doorcounty.net)) is a popular online magazine.

[info@doorguidepublishing.com](mailto:info@doorguidepublishing.com) (See map #67)

### EPHRAIM MORAVIAN CHURCH \*

9970 Moravia Street.....920-854-2804

The Ephraim Moravian Church is Door County's oldest, established 1853 by Andreas Iverson. The denomination is the oldest Protestant denomination, founded in 1457 in the Czech Republic. The Moravian motto is "In Essentials, Unity; in Non-Essentials, Liberty; in All Things, Love." Services are at 10:30 a.m. on Sundays. Check our website for special service times.

[www.EphraimMoravian.org](http://www.EphraimMoravian.org); [worship@ephraimmoravian.org](mailto:worship@ephraimmoravian.org) (See map #25)

### EPHRAIM VISITOR INFORMATION CENTERS \*

10049 Water Street (Hwy. 42).....920-854-4989

Ephraim's waterfront visitor information center provides all the maps, brochures, event calendars, and vacation guides to make your Door County vacation unforgettable. Ephraim and Fyr Bal merchandise is also available. Public Wi-Fi. The Visitor Information Center is open May through October. The winter Visitor Information Center is located in Ephraim Village Hall at 9996 Water Street (Hwy. 42) and is open by appointment.

[www.ephraim-doorcounty.com](http://www.ephraim-doorcounty.com); [vacation@ephraim-doorcounty.com](mailto:vacation@ephraim-doorcounty.com)  
(See map #43-Summer & #32-Winter)



## INNOVATIVE PRINTING ✱

2414 Country Walk Drive, Sister Bay.....920-854-2662

Graphic design, printing, your one stop print office.

[www.innovativeprintingllc.com](http://www.innovativeprintingllc.com); [artdept@innovativeprintingllc.com](mailto:artdept@innovativeprintingllc.com)

(See map #70)

## THE LODGE 106.9 ✱

10331 Water Street (Hwy. 42).....920-854-3400 or 920-746-1069

The Lodge plays music that fits the Door County lifestyle, showcasing an adult singer-songwriter format! Available on-air at fm106.9, 93.3, and streaming free online at [fm1069thelodge.com](http://fm1069thelodge.com), it's world class rock for a world class county! Keep up to date with Door County happenings! Tune in for the Lodge Activity Board daily at 7:50 and 11:50AM.

[Fm1069thelodge.com](http://Fm1069thelodge.com); [contact@fm1069thelodge.com](mailto:contact@fm1069thelodge.com) (See map #53)

## NICOLET NATIONAL BANK ✱

2477 S. Bay Shore Drive. (Hwy. 42), Sister Bay.....920-854-2326

Every great success story starts with a conversation. We invite you to talk with our local experts in personal and business banking, home loans, commercial banking and wealth management. Member FDIC. Equal Housing Lender. NMLS ID# 411069. SBA Preferred Lender. 24-hour drive up ATM at Nicolet Bank – Sister Bay. 24-hour drive up ATM accepting Nicolet Bank deposits located in Fish Creek at 4097 Hwy 42.

[www.nicoletbank.com](http://www.nicoletbank.com) (See map #71)

## THOMAS M. SCHUDER, S.C. ✱

2580 South Bay Shore Dr. (Hwy. 42), Sister Bay.....920-854-6877

Income tax planning, preparation and consultation for individuals, corporations, partnerships, estates and trusts. Business financial statement preparation. Business planning and consultation. Over 30 years accounting, tax and business experience. P.O. Box 388, Ephraim, WI 54211.

(See map #68)

## UNITARIAN UNIVERSALIST FELLOWSHIP OF DOOR COUNTY ✱

10341 Water Street (Hwy. 42) .....920-854-7559

UUFDC is an active community of faith seeking to connect to one another, grow in our spirituality, and expand in our understanding and compassion. We strive to create a more just community. We come together year-round for Sunday Services, welcoming all who share our principles and passion, or simply are curious to hear one of our wide-range of thoughtful and challenging speakers.

[uufdc.org](http://uufdc.org); [contact@uufdc.org](mailto:contact@uufdc.org) (See map #54)





Photo by: Luke Collins Photography  
[WWW.EPHRAIM-DOORCOUNTY.COM](http://WWW.EPHRAIM-DOORCOUNTY.COM)